



## CONTENTS

<b>SECTION 1 INITIAL ASSESSMENT</b>	<b>PAGE 1</b>
<b>SECTION 2 NOMENCLATURE</b>	<b>PAGE 2</b>
<b>SECTION 3 UNIT CONSTRUCTION</b>	<b>PAGE 3</b>
<b>SECTION 4 PERFORMANCE DATA</b>	<b>PAGE 6</b>
<b>SECTION 5 SPECIFICATIONS</b>	<b>PAGE 7</b>
<b>SECTION 6 ELECTRICAL</b>	<b>PAGE 31</b>
<b>SECTION 7 LIMITS</b>	<b>PAGE 32</b>
<b>SECTION 8 CABINET DIMENSIONS</b>	<b>PAGE 33</b>

**1.0 INITIAL ASSESSMENT**

Upon delivery of the unit, please review the bill of lading. Please verify all components of the unit have been delivered and are not damaged. Examine the crate and the system for damages. Proper notation of any shortages or damage must be noted and cited by the shipper on the freight bill and common carrier inspection report. A 30-day time frame of internal damage not initially viewed, is **usually** shipping companies standard. If this is not completed within the proper time, the shipping company may deny the claim without recourse. It is the responsibility of the purchaser to file all necessary claims with the shipping company.

**\*NOTE: DO NOT TIP UNITS ON THEIR SIDE, DAMAGE MAY OCCUR TO THE UNIT.**

## R-410A

**\*NOTE:** Manual gauge sets used with systems charged with R-410A should be capable of handling higher system operating pressures.

Gauges must be capable of:  
0-800 psig High Side gauge  
0-500 psig low side gauge

Gauge hoses must be capable of:  
800 psi working pressure  
4000 psi burst rating

Geofinity Manufacturing



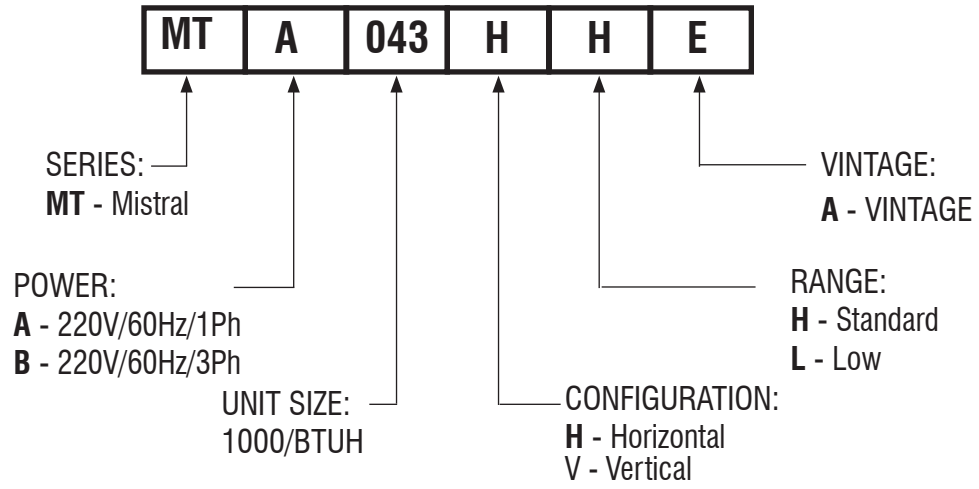
**1.1 RATINGS**

Rated per ARI/ISO standard 13256-1

- Cooling capacity based on 27°C/19°C Entering Air Temperature and 25°C/30°C Entering/Leaving Water Temperature.
- Heating capacity based on 20°C/15°C Entering Air Temperature and 0°C Entering Water Temperature.

# Nomenclature - Unit /Options

## UNIT NOMENCLATURE



## 1.2 UNIT DESCRIPTION

- Geofinity offers a complete line of high efficiency units from 3/4 to 6 tons.
- Multiple cabinet sizes with a similar shape allow for easy layout and installation.
- Each unit is run-tested with water in cooling and heating modes.
- Capacities and efficiencies are in accordance with ARI/ISO/ASHRAE.
- All units are listed for product safety by ETL.

## BEFORE INSTALLATION PERFORM A ROUTINE CHECK

**\*NOTE: SYSTEM INSTALLATION, REPAIR OR MAINTENANCE CAN BE HAZARDOUS DUE TO THE HIGH-PRESSURE REFRIGERANT AND 230 VOLT POWER. ONLY QUALIFIED SERVICE TECHNICIAN SHOULD ATTEMPT SERVICE OR MAINTENANCE ON THE SYSTEM. R-410A EQUIPMENT MUST BE USED TO SERVICE THE UNIT.**

- Verify the model number on the nameplate with the shipping information to be sure the correct product was received. The nameplate is located on the front panel.

- **CHECK THAT ALL ELECTRICAL CONNECTION ARE TIGHT.**
- **CHECK REFRIGERANT PIPING FOR DENTS OR KINKS.**
- **REMOVE ACCESSORY KITS FROM MECHANICAL COMPARTMENT.**
- **REMOVE ANY SHIPPING SUPPORT MATERIAL FROM THE FAN BLOWER.**

## 1.3 CABINET CONSTRUCTION

The cabinet is constructed of G-60,galvanized steel. Internal metal parts are also fabricated from galvanized steel. Cabinet insulation is 10mm thick, skin-coated fiberglass/PE. The entire bottom panel is insulated with the same material to prevent condensation and reduce noise transmission.

Three access panels for the compressor, fan and control box sections allow service to all major components. On a Horizontal cabinet the control box has its own entrance panel to limit exposure to other sections not requiring service. For Vertical units, the control box is located behind the main access panel, line voltage is supplied from the top panel of the system and low voltage thermostat connections are exposed on the top with a multi pin terminal strip. All major electrical components, including transformer, relays, contactor(s) and circuit board, are located inside the control box making it convenient to electrically service the unit.

A 10mm thick reusable filter is supplied in a factory-mounted filter bracket designed to accommodate a return air duct connection.

Horizontal units include factory-mounted hanger brackets and have four top-panel adjustable brackets with factory-mounted grommets.

On Vertical units the condensate line is internally trapped to eliminate the need for an external trap. A 7/8" ODD copper condensate connection outside the cabinet is provided on each unit. All units have female NPT copper water fittings outside the cabinet for connecting hoses.

All units incorporate female NPT water fittings outside the cabinet for connection to flexible hoses. A 22mm O.D. condensate connection is located outside the cabinet, adjacent to the water connections.

## 2.0 REFRIGERATION SYSTEM

The refrigeration system for each circuit consists of a scroll compressor, a coaxial water-to-refrigerant heat exchanger, an air side coil, thermal expansion valve, access valve, reversing valve and safety controls. The compressor is mounted on heavy-gauge mounting rails to dampen vibration.

The compressor is also mounted on neoprene isolators. This dual isolation ensures minimal noise transmission and quiet operation.

Each refrigeration circuit has high and low side access valves for servicing.

The large coaxial heat exchanger tube diameters prevent clogging, unlike brazed type heat exchangers which require mesh strainers. Additionally, the air coil is a copper-tube, aluminum finned selected for high efficiency.

The reversing valve is energized in the heating and is fail-safe to the cooling mode.

Safety controls include high and low (loss of charge protection) refrigeration pressure switches for each circuit. A lockout relay prevents the compressor from operating if any of the safeties trip.

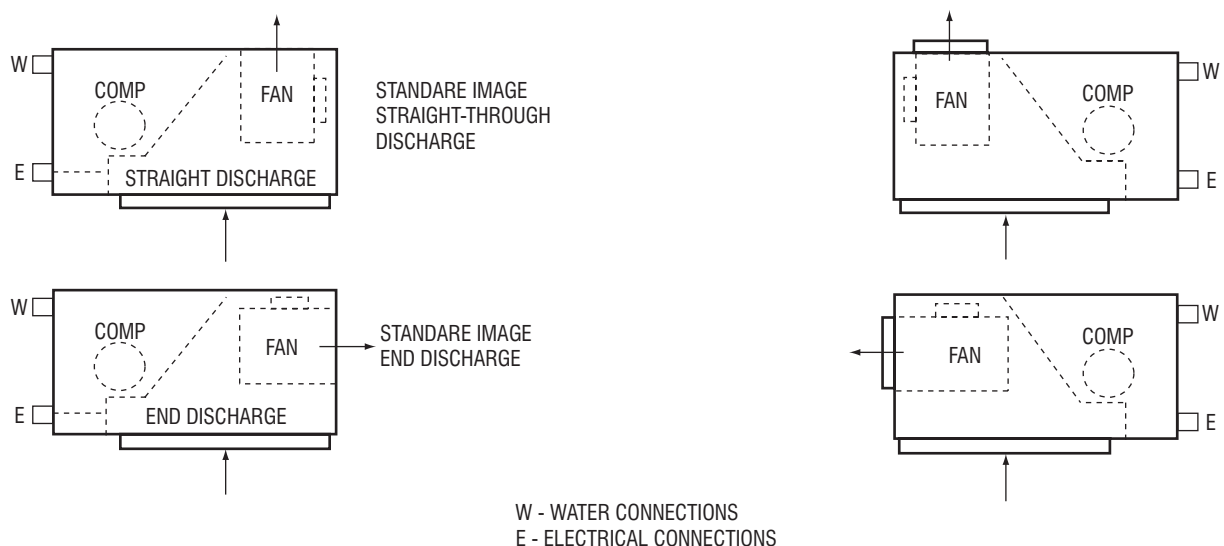
## 3.0 FAN SECTION

The fan section consists of the fan wheel/housing assembly, fan motor and drain pan. Air side components are separated from the compressor section to limit noise transmission from the compressor. The drain pan extends past the coil into the compressor section for easy cleaning. It is insulated from the unit casing to prevent sweating.

Horizontal: The units are capable of having two different discharge air arrangements: straight or end, both can be factory-installed in either configuration or simply converted from one to the other in the field. Mirror image units allow a "reversed" configuration.

All units have a direct drive fan assembly. The fan motor is a multispeed, with internal overload protection. With a maximum speed of 1200 rpm, the fan is quieter than the smaller of diameter motors used in similar products. Each centrifugal fan wheel is balance for minimum vibration.

FAN POSITION - DISCHARGE



## 4.0 ELECTRICAL AND CONTROL BOX

The control box houses all the electrical components with its own access panel. Controls include a transformer, printed-circuit board, compressor contactor, fan relay and a capacitor(s). The Control system offers a microprocessor-based unit controller and includes features such as:

## **FAN SPEED CONTROL**

Fan speed control is a standard feature with the microprocessor control system. It permits the fan motor to operate with High/Medium/Low speed to meet different requirement.

## **SAFETY LOCKOUT**

Safety lockout prevents compressor operation if any of the safety switches trip: high pressure switch, low pressure switch or optional freeze temperature protection. The unit can be reset from the wall thermostat or from the main unit disconnect.

## **HIGH AND LOW VOLTAGE PROTECTION**

High and low voltage protection shuts off the unit the event the unit voltage is too high or too low to protect the internal components from damage.

## **LOW PRESSURE SWITCH BYPASS**

Low pressure switch bypass ignores the low pressure input signal for 120 seconds each time.

## **CONDENSATE OVERFLOW PROTECTION**

Condensate overflow protection stops system operation if the drain pan sensor detects moisture at the top of the pan. This will prevent overflow due to clogged or slow draining condensate piping.

## **STANDARD UNIT FEATURES**

- Refrigerant leak protection, Frost-protection, Low Water temperature protection , Coil Frost-protection, High discharge temperature protection, Water flow switch(Optional), Fire-alarm, LCD error code display, Water pump interlock, Timer-power-ON/OFF, Economy operation mode

## **5.0 FACTORY MOUNTED OPTIONS (SEE NOMENCLATURE)**

Geofinity water source heat pumps offer numerous factory-installed options that can help minimize field labor and enhance system performance.

### **COOLING-ONLY**

Units are available for those applications requiring no heating from the unit.

### **AN EXTENDED-RANGE PACKAGE**

An extended-range package is available on all heat pump units to allow heating and cooling operation down to -5°C leaving water temperature. The package includes a TEV, an insulated coaxial heat exchanger and insulated refrigerant piping.

### **25/50 MM FILTER**

A 25mm and 50mm filter rack replaces the 10mm rack to allow for more efficient and longer lasting.

## **6.0 FIELD MOUNTED OPTIONS**

### **WATER FLOW SWITCH**

The Water Flow Switch will shut off the unit when the water flow is smaller than limit value to protect the system.

### **FLEXIBLE HOSE KITS**

Flexible hose kits are available in, 3/4" and 1" diameters, 600mm and 900mm long. Each hose is constructed of braided stainless steel and has NPT steel fittings with a swivel at one end. Hoses are rated at minimum 225 psi. A clear vinyl condensate hose includes clamps for connection to the 22mm OD condensate drain tube.

# Performance Data

WATER LOOP							
MODEL	RATED VOLTAGE	Air Flow CFM	Water Flow GPM	COOLING		HEATING	
				kW	EER	kW	COP
MT009	A	300	2.7	2.97	15.1	3.83	5.2
MT013	A	450	3.8	4.13	14.6	5.56	5.5
MT016	A	690	5.7	5.36	15.6	6.73	5.8
MT019	A	700	6	6.66	16.3	7.33	5.32
MT024	A	880	7.3	7.84	15.3	9.04	5.48
MT030	A	1010	9.1	9.79	15.2	10	4.85
MT036	A/B	1300	10.1	11.22	15.0	13.3	5.5
MT043	A/B	1390	12.2	13.09	14.6	15.28	4.98
MT052	A/B	1675	14.8	15.93	14.6	17.76	4.82
MT062	A/B	1825	15	17.84	13.9	18.93	4.4
MT072	A/B	1950	20.2	21.24	14.4	22.68	4.32

GROUND WATER							
MODEL	RATED VOLTAGE	Air Flow CFM	Water Flow GPM	COOLING		HEATING	
				kW	EER	kW	COP
MT009	A	300	1.3	3.18	18.4	3.25	4.62
MT013	A	450	1.8	4.68	18.3	4.65	4.78
MT016	A	690	2.1	5.48	18.6	5.47	4.85
MT019	A	700	2.5	6.86	19.1	6.81	4.76
MT024	A	880	3.3	8.89	19.7	7.72	4.7
MT030	A	1010	4.1	10.6	19.2	10.1	4.67
MT036	A/B	1300	4.6	11.3	16.9	11.3	4.73
MT043	A/B	1390	5.7	14	17.6	13.2	4.45
MT052	A/B	1675	6.6	16.8	17.5	14.5	4.22
MT062	A/B	1825	7.6	18.9	16.8	17.8	4.24
MT072	A/B	1950	9.1	22.2	16.3	20.8	4.18

GROUND LOOP							
MODEL	RATED VOLTAGE	Air Flow CFM	Water Flow GPM	COOLING		HEATING	
				VOLTAGE	EER	kW	COP
MT009	A	300	2.9	3.13	16.8	2.26	3.31
MT013	A	450	4.1	4.48	16.8	3.14	3.4
MT016	A	690	6.3	5.43	17.0	3.96	3.48
MT019	A	700	6.6	6.72	17.6	5.1	3.34
MT024	A	880	8	8.65	17.8	6.67	3.32
MT030	A	1010	9.9	10.2	17.5	7.83	3.31
MT036	A/B	1300	11.1	11.28	16.1	8.62	3.38
MT043	A/B	1390	13.1	13.77	16.2	10.73	3.28
MT052	A/B	1675	16.2	16.53	16.1	12.83	3.14
MT062	A/B	1825	18.2	18.87	15.3	13.94	3.15
MT072	A/B	1950	21.4	21.78	14.4	15.72	3.12

MT009																					
COOLING									HEATING												
Enter Water	GPM	Pressure Drop PSI	Enter Air Db/Wb°C	Total Capacity kW	Sensible Capacity kW	Heat Rejection kW	Power kW	Exit Water	Enter Water	Entering Air °C	Total Capacity kW	Sensible Capacity kW	Power kW								
5°C	2	1.8	<b>OUT OF RANGE</b>						5°C	10	2.53	2.00	0.526								
										15.6	2.38	1.82	0.553								
										20	2.23	1.65	0.580								
	2.7	3								26.7	2.11	1.50	0.609								
										10	2.58	2.04	0.539								
										15.6	2.42	1.86	0.566								
	3.3	4.1								20	2.28	1.68	0.595								
										26.7	2.15	1.52	0.624								
										10	2.68	2.13	0.548								
10°C	2	1.8	21/16	2.50	2.03	2.98	0.483	20.0	10°C	10	2.75	2.19	0.553								
			24/17	2.70	2.19	3.19	0.487	20.1		15.6	2.58	2.00	0.581								
			27/19	2.92	2.37	3.41	0.494	20.2		20	2.43	1.82	0.610								
			30/22	3.15	2.56	3.65	0.500	20.3		26.7	2.29	1.65	0.641								
	*	*	21/16	<b>OUT OF RANGE</b>						10	2.80	2.24	0.567								
			24/17							15.6	2.63	2.04	0.596								
			27/19							20	2.48	1.85	0.625								
			30/22							26.7	2.34	1.68	0.657								
	*	*	21/16							10	2.91	2.34	0.576								
			24/17							15.6	2.74	2.13	0.605								
			27/19							20	2.57	1.94	0.636								
			30/22							26.7	2.43	1.76	0.667								
	15°C	2	1.8							21/16	2.45	1.99	2.97	0.522	23.8	15°C	10	3.26	2.69	0.568	
										24/17	2.64	2.15	3.17	0.526	24		15.6	3.06	2.46	0.597	
										27/19	2.85	2.32	3.39	0.533	24.2		20	2.88	2.25	0.626	
30/22										3.08	2.50	3.62	0.540	24.3	26.7		2.71	2.06	0.658		
2.7		3	21/16							2.51	2.04	3.01	0.501	21.7	10		3.38	2.79	0.592		
			24/17							2.71	2.20	3.21	0.505	21.8	15.6		3.18	2.56	0.622		
			27/19							2.93	2.38	3.44	0.512	22	20		2.99	2.34	0.653		
			30/22	3.16	2.57	3.68	0.518	22.1	26.7	2.82	2.13	0.685									
3.3		4.1	21/16	2.53	2.06	3.01	0.481	21.2	10	3.54	2.94	0.601									
			24/17	2.74	2.22	3.22	0.485	21.4	15.6	3.32	2.69	0.631									
			27/19	2.96	2.40	3.45	0.491	21.5	20	3.12	2.46	0.663									
			30/22	3.19	2.59	3.69	0.498	21.7	26.7	2.95	2.25	0.696									

Table 2.0 - Knockouts

# Specifications - MT009

COOLING									HEATING				
Enter Water	GPM	Pressure Drop PSI	Enter Air Db/Wb°C	Total Capacity kW	Sensible Capacity kW	Heat Rejection kW	Power kW	Exit Water	Enter Water	Entering Air °C	Total Capacity kW	Sensible Capacity kW	Power kW
20°C	2	1.8	21/16	2.58	1.94	2.97	0.580	28.6	20°C	10	3.76	3.18	0.583
			24/17	2.79	2.10	3.16	0.585	28.8		15.6	3.54	2.93	0.612
			27/19	3.01	2.26	3.38	0.593	29.0		20	3.33	2.68	0.643
			30/22	3.26	2.44	3.61	0.600	29.2		26.7	3.14	2.46	0.675
	2.7	3	21/16	2.65	1.99	3.00	0.557	26.0		10	3.96	3.35	0.617
			24/17	2.86	2.15	3.20	0.562	26.2		15.6	3.72	3.08	0.648
			27/19	3.09	2.32	3.42	0.569	26.4		20	3.50	2.82	0.680
			30/22	3.34	2.51	3.66	0.576	26.5		26.7	3.30	2.59	0.714
	3.3	4.1	21/16	2.69	2.01	3.00	0.529	25.5		10	4.16	3.53	0.626
			24/17	2.91	2.17	3.20	0.533	25.6		15.6	3.91	3.25	0.657
			27/19	3.14	2.34	3.42	0.540	25.8		20	3.68	2.98	0.690
			30/22	3.39	2.53	3.66	0.547	26.0		26.7	3.47	2.74	0.725
25°C	2	1.8	21/16	2.53	1.89	2.92	0.588	32.9	25°C	10	4.14	3.54	0.602
			24/17	2.74	2.04	3.11	0.592	33.1		15.6	3.89	3.26	0.632
			27/19	2.96	2.21	3.32	0.600	33.3		20	3.66	2.99	0.663
			30/22	3.19	2.38	3.54	0.608	33.6		26.7	3.45	2.75	0.696
	2.7	3	21/16	2.6	1.94	2.97	0.579	29.9		10	4.36	3.72	0.635
			24/17	2.81	2.10	3.16	0.583	30.1		15.6	4.10	3.43	0.667
			27/19	3.03	2.26	3.38	0.591	30.3		20	3.85	3.15	0.700
			30/22	3.27	2.45	3.61	0.599	30.5		26.7	3.63	2.90	0.735
	3.3	4.1	21/16	2.64	1.97	2.98	0.556	29.3		10	4.58	3.93	0.645
			24/17	2.85	2.13	3.18	0.560	29.5		15.6	4.30	3.62	0.677
			27/19	3.08	2.30	3.39	0.567	29.7		20	4.04	3.33	0.711
			30/22	3.32	2.48	3.63	0.575	29.9		26.7	3.81	3.07	0.746
30°C	2	1.8	21/16	2.48	1.84	2.88	0.625	37.3	30°C	10	4.47	3.85	0.620
			24/17	2.68	1.98	3.07	0.633	37.6		15.6	4.20	3.55	0.651
			27/19	2.9	2.14	3.28	0.641	37.8		20	3.95	3.27	0.683
			30/22	3.13	2.31	3.50	0.650	38.1		26.7	3.73	3.01	0.717
	2.7	3	21/16	2.55	1.88	2.93	0.616	34.4		10	4.71	4.06	0.644
			24/17	2.75	2.04	3.13	0.624	34.6		15.6	4.42	3.75	0.676
			27/19	2.97	2.20	3.34	0.632	34.9		20	4.16	3.45	0.710
			30/22	3.21	2.37	3.56	0.640	35.1		26.7	3.92	3.18	0.745
	3.3	4.1	21/16	2.59	1.91	2.95	0.600	33.7		10	4.94	4.28	0.664
			24/17	2.79	2.07	3.15	0.605	33.9		15.6	4.65	3.95	0.697
			27/19	3.02	2.23	3.36	0.613	34.2		20	4.37	3.63	0.732
			30/22	3.26	2.41	3.58	0.621	34.4		26.7	4.12	3.35	0.769
35°C	2	1.8	21/16	2.38	1.76	2.87	0.697	43.4	35°C	10	5.16	4.56	0.683
			24/17	2.57	1.90	3.04	0.703	43.7		15.6	4.87	4.24	0.715
			27/19	2.78	2.06	3.24	0.712	44.0		20	4.60	3.92	0.747
			30/22	3	2.22	3.45	0.721	44.3		26.7	4.33	3.60	0.779
	2.7	3	21/16	2.41	1.78	2.87	0.683	39.9		10	5.38	4.76	0.699
			24/17	2.6	1.92	3.05	0.689	40.2		15.6	5.09	4.44	0.731
			27/19	2.81	2.08	3.25	0.698	40.5		20	4.82	4.12	0.763
			30/22	3.03	2.24	3.47	0.707	40.8		26.7	4.55	3.80	0.795
	3.3	4.1	21/16	2.46	1.82	2.90	0.660	38.7		10	5.60	4.94	0.709
			24/17	2.65	1.96	3.08	0.665	39.0		15.6	5.31	4.62	0.741
			27/19	2.87	2.12	3.28	0.674	39.3		20	5.04	4.30	0.773
			30/22	3.1	2.29	3.50	0.683	39.6		26.7	4.77	4.00	0.805

MT013																											
COOLING									HEATING																		
Enter Water	GPM	Pressure Drop PSI	Enter Air Db/Wb°C	Total Capacity kW	Sensible Capacity kW	Heat Rejection kW	Power kW	Exit Water	Enter Water	Entering Air °C	Total Capacity kW	Sensible Capacity kW	Power kW														
5°C	2.9	2.3	<b>OUT OF RANGE</b>						5°C	10	3.48	2.71	0.772														
										15.6	3.30	2.49	0.811														
										20	3.13	2.28	0.852														
	3.8	3.7								26.7	2.96	2.07	0.894														
										10	3.55	2.76	0.792														
										15.6	3.36	2.53	0.831														
	4.8	5.2								20	3.19	2.32	0.873														
										26.7	3.02	2.11	0.917														
										10	3.69	2.89	0.804														
10°C	2.9	2.3	21/16	3.42	2.78	4.13	0.707	20	10	3.78	2.97	0.812															
			24/17	3.70	3.01	4.40	0.702	20.2	15.6	3.59	2.73	0.853															
			27/19	3.99	3.25	4.69	0.699	20.3	20	3.40	2.50	0.896															
			30/22	4.31	3.51	5.02	0.709	20.4	26.7	3.22	2.28	0.940															
	*	*	<b>OUT OF RANGE</b>						10°C	10	3.86	3.03	0.833														
										15.6	3.66	2.78	0.874														
										20	3.47	2.55	0.918														
										26.7	3.29	2.32	0.964														
	*	*								21/16	<b>OUT OF RANGE</b>						10°C	10	4.01	3.16	0.846						
										24/17								15.6	3.80	2.91	0.888						
										27/19								20	3.60	2.67	0.933						
										30/22								26.7	3.41	2.44	0.979						
15°C	2.9	2.3								21/16								3.66	2.72	4.11	0.763	23.9	10	4.48	3.65	0.834	
										24/17								3.96	2.94	4.38	0.759	24.1	15.6	4.25	3.37	0.876	
										27/19								4.27	3.18	4.66	0.755	24.2	20	4.03	3.11	0.919	
										30/22								4.61	3.43	4.99	0.765	24.4	26.7	3.82	2.85	0.965	
	3.8	3.7	21/16	3.76	2.79	4.17	0.733	21.7	10	4.60								3.73	0.869								
			24/17	4.06	3.02	4.44	0.728	21.9	15.6	4.36								3.45	0.912								
			27/19	4.38	3.26	4.73	0.725	22	20	4.13								3.18	0.958								
			30/22	4.73	3.52	5.06	0.735	22.2	26.7	3.92								2.91	1.006								
	4.8	5.2	21/16	3.81	2.82	4.17	0.703	21.3	10	4.81	3.93	0.882															
			24/17	4.12	3.05	4.45	0.699	21.4	15.6	4.56	3.63	0.927															
			27/19	4.45	3.29	4.74	0.696	21.6	20	4.32	3.35	0.973															
			30/22	4.8	3.55	5.08	0.705	21.7	26.7	4.10	3.07	1.022															

# Specifications - MT013

COOLING									HEATING				
Enter Water	GPM	Pressure Drop PSI	Enter Air Db/Wb°C	Total Capacity kW	Sensible Capacity kW	Heat Rejection kW	Power kW	Exit Water	Enter Water	Entering Air °C	Total Capacity kW	Sensible Capacity kW	Power kW
20°C	2.9	2.3	21/16	3.59	2.66	4.12	0.848	28.7	20°C	10	5.18	4.33	0.856
			24/17	3.88	2.87	4.37	0.843	28.9		15.6	4.91	4.01	0.898
			27/19	4.19	3.10	4.65	0.839	29.1		20	4.66	3.71	0.943
			30/22	4.52	3.35	4.97	0.851	29.3		26.7	4.41	3.42	0.990
	3.8	3.7	21/16	3.68	2.73	4.17	0.814	26.1		10	5.34	4.44	0.905
			24/17	3.98	2.94	4.43	0.809	26.2		15.6	5.06	4.11	0.951
			27/19	4.3	3.18	4.72	0.805	26.4		20	4.80	3.80	0.998
			30/22	4.64	3.43	5.04	0.817	26.6		26.7	4.55	3.50	1.048
	4.8	5.2	21/16	3.74	2.75	4.16	0.774	25.5		10	5.61	4.69	0.919
			24/17	4.04	2.97	4.43	0.769	25.7		15.6	5.32	4.35	0.965
			27/19	4.36	3.21	4.71	0.765	25.9		20	5.04	4.03	1.013
			30/22	4.71	3.47	5.04	0.776	26.1		26.7	4.78	3.71	1.064
25°C	2.9	2.3	21/16	3.52	2.59	4.05	0.859	33	25°C	10	5.70	4.82	0.883
			24/17	3.8	2.80	4.30	0.854	33.2		15.6	5.40	4.48	0.927
			27/19	4.11	3.02	4.57	0.850	33.4		20	5.12	4.15	0.973
			30/22	4.44	3.27	4.88	0.861	33.7		26.7	4.85	3.83	1.022
	3.8	3.7	21/16	3.61	2.66	4.12	0.846	30		10	5.88	4.94	0.932
			24/17	3.9	2.87	4.37	0.841	30.2		15.6	5.57	4.59	0.979
			27/19	4.21	3.10	4.65	0.837	30.4		20	5.28	4.25	1.028
			30/22	4.55	3.35	4.97	0.849	30.6		26.7	5.01	3.93	1.079
	4.8	5.2	21/16	3.67	2.70	4.13	0.812	29.4		10	6.17	5.22	0.946
			24/17	3.96	2.91	4.39	0.807	29.6		15.6	5.85	4.86	0.994
			27/19	4.28	3.15	4.68	0.803	29.8		20	5.54	4.50	1.043
			30/22	4.62	3.40	5.00	0.815	30		26.7	5.26	4.16	1.096
30°C	2.9	2.3	21/16	3.45	2.52	4.01	0.913	37.4	30°C	10	6.16	5.25	0.909
			24/17	3.73	2.72	4.26	0.912	37.7		15.6	5.84	4.88	0.955
			27/19	4.03	2.94	4.52	0.908	37.9		20	5.53	4.53	1.003
			30/22	4.35	3.17	4.82	0.921	38.2		26.7	5.24	4.19	1.053
	3.8	3.7	21/16	3.54	2.58	4.08	0.900	34.5		10	6.35	5.40	0.945
			24/17	3.82	2.79	4.33	0.899	34.7		15.6	6.02	5.02	0.992
			27/19	4.13	3.01	4.60	0.894	35		20	5.70	4.66	1.041
			30/22	4.46	3.25	4.91	0.907	35.2		26.7	5.41	4.31	1.093
	4.8	5.2	21/16	3.59	2.62	4.10	0.877	33.8		10	6.66	5.69	0.975
			24/17	3.88	2.83	4.35	0.872	34		15.6	6.32	5.29	1.024
			27/19	4.19	3.06	4.63	0.868	34.3		20	5.99	4.91	1.075
			30/22	4.53	3.30	4.94	0.880	34.5		26.7	5.68	4.55	1.129
35°C	2.9	2.3	21/16	3.31	2.42	3.99	1.019	43.5					
			24/17	3.58	2.61	4.22	1.013	43.8					
			27/19	3.86	2.82	4.47	1.008	44.1					
			30/22	4.17	3.04	4.76	1.022	44.5					
	3.8	3.7	21/16	3.35	2.44	4.00	0.999	40.1					
			24/17	3.61	2.63	4.23	0.993	40.3					
			27/19	3.9	2.85	4.49	0.988	40.6					
			30/22	4.21	3.07	4.78	1.002	40.9					
	4.8	5.2	21/16	3.41	2.49	4.03	0.965	38.8					
			24/17	3.69	2.69	4.27	0.959	39.1					
			27/19	3.98	2.90	4.53	0.954	39.4					
			30/22	4.3	3.14	4.82	0.968	39.7					

MT016																									
COOLING									HEATING																
Enter Water	GPM	Pressure Drop PSI	Enter Air Db/Wb°C	Total Capacity kW	Sensible Capacity kW	Heat Rejection kW	Power kW	Exit Water	Enter Water	Entering Air °C	Total Capacity kW	Sensible Capacity kW	Power kW												
5°C	4.3	4.1	<b>OUT OF RANGE</b>							5°C	10	4.21	3.362	0.845											
											15.6	3.99	3.101	0.887											
											20	3.78	2.848	0.931											
	5.7	6.6									26.7	3.58	2.605	0.978											
											10	4.29	3.425	0.866											
											15.6	4.07	3.158	0.909											
											20	3.86	2.901	0.955											
											26.7	3.65	2.652	1.002											
											10	4.46	3.580	0.879											
7.2	9.3	15.6	4.23	3.304	0.923																				
		20	4.01	3.037	0.969																				
		26.7	3.80	2.780	1.018																				
10°C	4.3	4.1	21/16	4.63	3.76	5.52	0.894	20.1	10°C	10	4.57	3.684	0.888												
			24/17	5.00	4.07	5.89	0.888	20.3		15.6	4.33	3.402	0.933												
			27/19	5.40	4.39	6.29	0.884	20.4		20	4.11	3.129	0.979												
			30/22	5.83	4.74	6.73	0.897	20.5		26.7	3.89	2.866	1.028												
	*	*	<b>OUT OF RANGE</b>								10	4.66	3.754	0.910											
											15.6	4.42	3.465	0.956											
											20	4.19	3.187	1.004											
											26.7	3.97	2.918	1.054											
	*	*								21/16	<b>OUT OF RANGE</b>							10	4.85	3.922	0.925				
										24/17								15.6	4.59	3.623	0.971				
										27/19								20	4.35	3.335	1.020				
										30/22								26.7	4.13	3.057	1.071				
15°C	4.3	4.1							21/16	4.53							3.68	5.50	0.965	24	15°C	10	5.42	4.507	0.912
									24/17	4.89							3.98	5.85	0.959	24.1		15.6	5.14	4.179	0.957
									27/19	5.29							4.30	6.24	0.954	24.3		20	4.87	3.863	1.005
									30/22	5.71							4.64	6.68	0.969	24.5		26.7	4.61	3.559	1.056
	5.7	6.6	21/16	4.65	3.78	5.57	0.926	21.8	10	5.56							4.611	0.950							
			24/17	5.02	4.08	5.94	0.921	21.9	15.6	5.27							4.274	0.998							
			27/19	5.42	4.41	6.34	0.916	22.1	20	5.00							3.949	1.048							
			30/22	5.85	4.76	6.78	0.930	22.2	26.7	4.74							3.636	1.100							
	7.2	9.3	21/16	4.69	3.82	5.58	0.889	21.3	10	5.81	4.849	0.965													
			24/17	5.07	4.12	5.95	0.884	21.5	15.6	5.51	4.498	1.013													
			27/19	5.48	4.45	6.35	0.880	21.6	20	5.22	4.160	1.064													
			30/22	5.91	4.81	6.81	0.893	21.8	26.7	4.95	3.834	1.117													

# Specifications - MT016

COOLING									HEATING				
Enter Water	GPM	Pressure Drop PSI	Enter Air Db/Wb°C	Total Capacity kW	Sensible Capacity kW	Heat Rejection kW	Power kW	Exit Water	Enter Water	Entering Air °C	Total Capacity kW	Sensible Capacity kW	Power kW
20°C	4.3	4.1	21/16	4.42	3.59	5.49	1.073	28.8	20°C	10	6.265	5.329	0.936
			24/17	4.77	3.88	5.84	1.066	29		15.6	5.938	4.956	0.982
			27/19	5.16	4.19	6.22	1.061	29.2		20	5.628	4.597	1.031
			30/22	5.57	4.53	6.65	1.077	29.4		26.7	5.335	4.252	1.083
	5.7	6.6	21/16	4.53	3.69	5.56	1.030	26.1		10	6.458	5.468	0.990
			24/17	4.90	3.98	5.92	1.023	26.3		15.6	6.122	5.082	1.039
			27/19	5.29	4.30	6.31	1.018	26.5		20	5.803	4.711	1.091
			30/22	5.71	4.64	6.75	1.034	26.7		26.7	5.500	4.354	1.146
	7.2	9.3	21/16	4.58	3.72	5.56	0.978	25.6		10	6.781	5.776	1.005
			24/17	4.95	4.02	5.92	0.972	25.8		15.6	6.428	5.373	1.055
			27/19	5.34	4.34	6.31	0.967	26		20	6.093	4.985	1.108
			30/22	5.77	4.69	6.75	0.982	26.2		26.7	5.775	4.612	1.163
25°C	4.3	4.1	21/16	4.31	3.51	5.40	1.086	33.1	25°C	10	6.89	5.926	0.965
			24/17	4.66	3.79	5.74	1.080	33.3		15.6	6.53	5.518	1.014
			27/19	5.03	4.09	6.10	1.074	33.5		20	6.19	5.127	1.064
			30/22	5.43	4.42	6.52	1.090	33.8		26.7	5.87	4.751	1.118
	5.7	6.6	21/16	4.42	3.60	5.49	1.070	30.1		10	7.10	6.085	1.020
			24/17	4.78	3.88	5.84	1.063	30.3		15.6	6.73	5.663	1.071
			27/19	5.16	4.19	6.22	1.058	30.5		20	6.38	5.259	1.124
			30/22	5.57	4.53	6.65	1.074	30.7		26.7	6.05	4.870	1.180
	7.2	9.3	21/16	4.49	3.65	5.52	1.027	29.5		10	7.46	6.424	1.035
			24/17	4.85	3.94	5.87	1.021	29.7		15.6	7.07	5.984	1.087
			27/19	5.24	4.26	6.25	1.016	29.9		20	6.70	5.561	1.141
			30/22	5.66	4.60	6.69	1.031	30.1		26.7	6.35	5.154	1.198
30°C	4.3	4.1	21/16	4.19	3.40	5.34	1.155	37.5	30°C	10	7.44	6.448	0.994
			24/17	4.52	3.68	5.68	1.154	37.8		15.6	7.05	6.010	1.044
			27/19	4.88	3.97	6.03	1.148	38		20	6.69	5.590	1.096
			30/22	5.27	4.29	6.44	1.165	38.3		26.7	6.34	5.187	1.151
	5.7	6.6	21/16	4.29	3.49	5.43	1.138	34.6		10	7.67	6.640	1.033
			24/17	4.64	3.77	5.77	1.137	34.8		15.6	7.27	6.188	1.085
			27/19	5.01	4.07	6.14	1.131	35.1		20	6.89	5.755	1.139
			30/22	5.41	4.40	6.56	1.148	35.3		26.7	6.53	5.338	1.196
	7.2	9.3	21/16	4.36	3.54	5.47	1.109	33.9		10	8.06	6.990	1.066
			24/17	4.71	3.83	5.81	1.103	34.1		15.6	7.64	6.517	1.119
			27/19	5.08	4.13	6.18	1.097	34.4		20	7.24	6.063	1.175
			30/22	5.49	4.46	6.60	1.114	34.6		26.7	6.86	5.627	1.234
35°C	4.3	4.1	21/16	4.02	3.27	5.31	1.288	43.7					
			24/17	4.34	3.53	5.62	1.280	44					
			27/19	4.69	3.81	5.96	1.274	44.3					
			30/22	5.06	4.11	6.35	1.293	44.6					
	5.7	6.6	21/16	4.06	3.30	5.32	1.263	40.2					
			24/17	4.38	3.56	5.64	1.255	40.4					
			27/19	4.73	3.85	5.98	1.249	40.7					
			30/22	5.11	4.16	6.38	1.268	41					
	7.2	9.3	21/16	4.14	3.37	5.36	1.220	39					
			24/17	4.47	3.64	5.69	1.213	39.2					
			27/19	4.83	3.93	6.04	1.207	39.5					
			30/22	5.22	4.24	6.44	1.225	39.8					

MT019																									
COOLING									HEATING																
Enter Water	GPM	Pressure Drop PSI	Enter Air Db/Wb°C	Total Capacity kW	Sensible Capacity kW	Heat Rejection kW	Power kW	Exit Water	Enter Water	Entering Air °C	Total Capacity kW	Sensible Capacity kW	Power kW												
5°C	4.5	4.7	<b>OUT OF RANGE</b>						5°C	10	5.14	4.062	1.074												
										15.6	4.85	3.718	1.128												
										20	4.57	3.387	1.184												
	6	7.5								26.7	4.31	3.069	1.243												
										10	5.24	4.138	1.101												
										15.6	4.94	3.786	1.156												
	7.5	10.6								20	4.66	3.449	1.214												
										26.7	4.40	3.124	1.274												
										10	5.44	4.327	1.118												
10°C	4.5	4.7	21/16	5.365	4.362	6.478	1.113	20.1	10°C	10	5.58	4.453	1.129												
			24/17	5.795	4.711	6.901	1.106	20.3		15.6	5.27	4.081	1.186												
			27/19	6.258	5.088	7.359	1.101	20.4		20	4.97	3.723	1.245												
			30/22	6.759	5.495	7.876	1.117	20.5		26.7	4.69	3.380	1.307												
	*	*	<b>OUT OF RANGE</b>							10	5.69	4.537	1.158												
										15.6	5.37	4.156	1.215												
										20	5.07	3.792	1.276												
										26.7	4.78	3.441	1.340												
	*	*								21/16	<b>OUT OF RANGE</b>						10	5.92	4.741	1.176					
										24/17							15.6	5.58	4.347	1.235					
										27/19							20	5.27	3.970	1.297					
										30/22							26.7	4.97	3.607	1.362					
15°C	4.5	4.7							21/16	5.25							4.268	6.452	1.202	24.1	15°C	10	6.62	5.456	1.159
									24/17	5.67							4.610	6.865	1.195	24.3		15.6	6.24	5.023	1.217
									27/19	6.12							4.978	7.312	1.189	24.4		20	5.89	4.609	1.278
									30/22	6.61							5.377	7.820	1.207	24.6		26.7	5.55	4.212	1.342
	6	7.5	21/16	5.38	4.378	6.538	1.154	21.9	10	6.79							5.581	1.208							
			24/17	5.82	4.728	6.962	1.147	22.1	15.6	6.41							5.137	1.268							
			27/19	6.28	5.106	7.422	1.141	22.2	20	6.04							4.711	1.332							
			30/22	6.78	5.515	7.941	1.158	22.4	26.7	5.70							4.302	1.398							
	7.5	10.6	21/16	5.44	4.422	6.546	1.108	21.5	10	7.10	5.871	1.227													
			24/17	5.87	4.775	6.975	1.101	21.6	15.6	6.70	5.408	1.288													
			27/19	6.34	5.157	7.439	1.096	21.8	20	6.32	4.965	1.353													
			30/22	6.85	5.570	7.963	1.112	21.9	26.7	5.96	4.539	1.420													

# Specifications - MT019

COOLING									HEATING				
Enter Water	GPM	Pressure Drop PSI	Enter Air Db/Wb°C	Total Capacity kW	Sensible Capacity kW	Heat Rejection kW	Power kW	Exit Water	Enter Water	Entering Air °C	Total Capacity kW	Sensible Capacity kW	Power kW
20°C	4.5	4.7	21/16	5.12	4.164	6.458	1.336	28.9	20°C	10	7.648	6.459	1.189
			24/17	5.53	4.497	6.860	1.328	29.1		15.6	7.215	5.966	1.249
			27/19	5.97	4.857	7.295	1.321	29.3		20	6.807	5.495	1.311
			30/22	6.45	5.246	7.793	1.341	29.5		26.7	6.421	5.045	1.377
	6	7.5	21/16	5.25	4.271	6.536	1.283	26.3		10	7.885	6.626	1.259
			24/17	5.67	4.613	6.948	1.275	26.5		15.6	7.438	6.117	1.322
			27/19	6.13	4.982	7.396	1.269	26.7		20	7.017	5.630	1.388
			30/22	6.62	5.380	7.905	1.288	26.8		26.7	6.620	5.163	1.457
	7.5	10.6	21/16	5.31	4.314	6.525	1.219	25.8		10	8.279	7.001	1.277
			24/17	5.73	4.659	6.942	1.211	25.9		15.6	7.810	6.469	1.341
			27/19	6.19	5.032	7.394	1.205	26.1		20	7.368	5.960	1.408
			30/22	6.68	5.434	7.907	1.223	26.3		26.7	6.951	5.472	1.479
25°C	4.5	4.7	21/16	5.00	4.063	6.350	1.353	33.3	25°C	10	8.41	7.185	1.227
			24/17	5.40	4.388	6.741	1.345	33.5		15.6	7.94	6.648	1.289
			27/19	5.83	4.739	7.167	1.338	33.7		20	7.49	6.134	1.353
			30/22	6.29	5.118	7.653	1.358	34		26.7	7.06	5.643	1.421
	6	7.5	21/16	5.13	4.167	6.458	1.333	30.2		10	8.67	7.377	1.296
			24/17	5.54	4.500	6.860	1.325	30.4		15.6	8.18	6.821	1.361
			27/19	5.98	4.860	7.296	1.318	30.7		20	7.72	6.290	1.429
			30/22	6.46	5.249	7.794	1.338	30.9		26.7	7.28	5.781	1.501
	7.5	10.6	21/16	5.20	4.229	6.481	1.280	29.6		10	9.11	7.791	1.316
			24/17	5.62	4.568	6.890	1.272	29.8		15.6	8.59	7.210	1.382
			27/19	6.07	4.933	7.333	1.265	30		20	8.10	6.654	1.451
			30/22	6.55	5.328	7.837	1.284	30.3		26.7	7.65	6.123	1.523
30°C	4.5	4.7	21/16	4.851	3.944	6.290	1.439	37.7	30°C	10	9.09	7.822	1.264
			24/17	5.239	4.260	6.677	1.437	38		15.6	8.57	7.244	1.327
			27/19	5.659	4.600	7.089	1.430	38.2		20	8.09	6.692	1.394
			30/22	6.111	4.969	7.563	1.451	38.5		26.7	7.63	6.165	1.464
	6	7.5	21/16	4.976	4.045	6.393	1.417	34.8		10	9.37	8.054	1.313
			24/17	5.374	4.369	6.790	1.416	35		15.6	8.84	7.458	1.379
			27/19	5.804	4.718	7.213	1.409	35.3		20	8.34	6.889	1.448
			30/22	6.268	5.096	7.698	1.430	35.5		26.7	7.86	6.344	1.520
	7.5	10.6	21/16	5.050	4.106	6.432	1.382	34.1		10	9.84	8.480	1.355
			24/17	5.454	4.434	6.828	1.373	34.3		15.6	9.28	7.855	1.423
			27/19	5.891	4.789	7.257	1.367	34.5		20	8.75	7.259	1.494
			30/22	6.362	5.172	7.749	1.387	34.8		26.7	8.26	6.689	1.569
35°C	4.5	4.7	21/16	4.655	3.784	6.260	1.605	43.9					
			24/17	5.027	4.087	6.622	1.595	44.2					
			27/19	5.429	4.414	7.016	1.587	44.5					
			30/22	5.864	4.767	7.475	1.611	44.8					
	6	7.5	21/16	4.702	3.823	6.275	1.573	40.4					
			24/17	5.078	4.128	6.642	1.564	40.7					
			27/19	5.484	4.459	7.040	1.556	41					
			30/22	5.923	4.815	7.502	1.579	41.2					
	7.5	10.6	21/16	4.798	3.901	6.318	1.520	39.2					
			24/17	5.182	4.213	6.692	1.511	39.5					
			27/19	5.596	4.550	7.099	1.503	39.7					
			30/22	6.044	4.914	7.570	1.526	40					

MT024																									
COOLING									HEATING																
Enter Water	GPM	Pressure Drop PSI	Enter Air Db/Wb°C	Total Capacity kW	Sensible Capacity kW	Heat Rejection kW	Power kW	Exit Water	Enter Water	Entering Air °C	Total Capacity kW	Sensible Capacity kW	Power kW												
5°C	5.5	3.6	<b>OUT OF RANGE</b>						5°C	10	6.28	5.042	1.235												
										15.6	5.90	4.602	1.297												
										20	5.54	4.183	1.362												
	7.25	5.8								26.7	5.23	3.801	1.430												
										10	6.40	5.136	1.266												
										15.6	6.02	4.688	1.330												
	9	8.2								20	5.66	4.259	1.396												
										26.7	5.34	3.869	1.466												
										10	6.65	5.368	1.285												
10°C	5.5	3.6	21/16	6.493	5.279	7.747	1.255	20.1	10°C	10	6.82	5.524	1.299												
			24/17	7.012	5.701	8.259	1.247	20.3		15.6	6.41	5.048	1.364												
			27/19	7.573	6.157	8.814	1.241	20.4		20	6.03	4.594	1.432												
			30/22	8.179	6.650	9.438	1.259	20.5		26.7	5.69	4.182	1.504												
	*	*	<b>OUT OF RANGE</b>							10	6.96	5.628	1.331												
										15.6	6.54	5.142	1.398												
										20	6.15	4.679	1.468												
										26.7	5.80	4.258	1.541												
	*	*								21/16	<b>OUT OF RANGE</b>						10	7.23	5.879	1.353					
										24/17							15.6	6.80	5.376	1.421					
										27/19							20	6.39	4.896	1.492					
										30/22							26.7	6.03	4.460	1.566					
15°C	5.5	3.6							21/16	6.35							5.165	7.708	1.355	23.9	15°C	10	8.08	6.751	1.334
									24/17	6.86							5.578	8.208	1.347	24.1		15.6	7.60	6.198	1.400
									27/19	7.41							6.024	8.750	1.340	24.2		20	7.14	5.671	1.470
									30/22	8.00							6.506	9.363	1.360	24.4		26.7	6.74	5.193	1.544
	7.25	5.8	21/16	6.52	5.297	7.817	1.301	21.7	10	8.30							6.908	1.390							
			24/17	7.04	5.721	8.330	1.293	21.9	15.6	7.80							6.339	1.459							
			27/19	7.60	6.179	8.887	1.286	22	20	7.33							5.797	1.532							
			30/22	8.21	6.673	9.514	1.306	22.2	26.7	6.91							5.306	1.609							
	9	8.2	21/16	6.58	5.351	7.830	1.249	21.3	10	8.68	7.264	1.411													
			24/17	7.11	5.779	8.349	1.241	21.4	15.6	8.15	6.671	1.482													
			27/19	7.68	6.241	8.911	1.235	21.6	20	7.66	6.107	1.556													
			30/22	8.29	6.740	9.544	1.254	21.7	26.7	7.23	5.595	1.634													

# Specifications - MT024

COOLING									HEATING				
Enter Water	GPM	Pressure Drop PSI	Enter Air Db/Wb°C	Total Capacity kW	Sensible Capacity kW	Heat Rejection kW	Power kW	Exit Water	Enter Water	Entering Air °C	Total Capacity kW	Sensible Capacity kW	Power kW
20°C	5.5	3.6	21/16	6.20	5.039	7.704	1.506	28.7	20°C	10	9.347	7.979	1.368
			24/17	6.69	5.442	8.191	1.497	28.9		15.6	8.785	7.348	1.437
			27/19	7.23	5.877	8.719	1.490	29.1		20	8.256	6.748	1.508
			30/22	7.81	6.348	9.320	1.512	29.3		26.7	7.789	6.205	1.584
	7.25	5.8	21/16	6.36	5.168	7.803	1.446	26.1		10	9.636	8.188	1.448
			24/17	6.87	5.582	8.303	1.437	26.2		15.6	9.057	7.536	1.520
			27/19	7.41	6.028	8.845	1.430	26.4		20	8.512	6.916	1.596
			30/22	8.01	6.510	9.459	1.451	26.6		26.7	8.030	6.354	1.676
	9	8.2	21/16	6.42	5.220	7.794	1.374	25.5		10	10.118	8.648	1.470
			24/17	6.93	5.638	8.300	1.365	25.7		15.6	9.509	7.966	1.543
			27/19	7.49	6.089	8.848	1.358	25.9		20	8.937	7.317	1.620
			30/22	8.09	6.576	9.467	1.379	26.1		26.7	8.432	6.730	1.701
25°C	5.5	3.6	21/16	6.05	4.916	7.572	1.525	33	25°C	10	10.28	8.870	1.412
			24/17	6.53	5.309	8.047	1.516	33.2		15.6	9.66	8.181	1.483
			27/19	7.05	5.734	8.561	1.508	33.4		20	9.08	7.525	1.557
			30/22	7.62	6.193	9.148	1.531	33.7		26.7	8.57	6.934	1.635
	7.25	5.8	21/16	6.20	5.042	7.704	1.502	30		10	10.60	9.109	1.491
			24/17	6.70	5.446	8.191	1.493	30.2		15.6	9.96	8.396	1.566
			27/19	7.23	5.881	8.720	1.486	30.4		20	9.36	7.719	1.644
			30/22	7.81	6.352	9.321	1.508	30.6		26.7	8.83	7.107	1.726
	9	8.2	21/16	6.29	5.118	7.737	1.442	29.4		10	11.13	9.616	1.514
			24/17	6.80	5.527	8.232	1.434	29.6		15.6	10.46	8.871	1.589
			27/19	7.34	5.969	8.769	1.426	29.8		20	9.83	8.162	1.669
			30/22	7.93	6.447	9.378	1.448	30		26.7	9.27	7.522	1.752
30°C	5.5	3.6	21/16	5.871	4.773	7.492	1.622	37.4	30°C	10	11.10	9.650	1.454
			24/17	6.340	5.155	7.960	1.620	37.7		15.6	10.44	8.909	1.527
			27/19	6.848	5.567	8.460	1.612	37.9		20	9.81	8.205	1.603
			30/22	7.395	6.013	9.032	1.636	38.2		26.7	9.25	7.570	1.684
	7.25	5.8	21/16	6.021	4.895	7.619	1.598	34.5		10	11.45	9.937	1.511
			24/17	6.503	5.287	8.099	1.596	34.7		15.6	10.76	9.173	1.586
			27/19	7.023	5.710	8.611	1.588	35		20	10.11	8.447	1.665
			30/22	7.585	6.167	9.197	1.612	35.2		26.7	9.54	7.791	1.749
	9	8.2	21/16	6.112	4.969	7.669	1.558	33.8		10	12.02	10.461	1.559
			24/17	6.600	5.366	8.149	1.548	34		15.6	11.30	9.660	1.637
			27/19	7.128	5.796	8.669	1.541	34.3		20	10.62	8.899	1.719
			30/22	7.699	6.259	9.262	1.564	34.5		26.7	10.02	8.212	1.805
35°C	5.5	3.6	21/16	5.633	4.580	7.442	1.809	43.5					
			24/17	6.084	4.946	7.881	1.798	43.8					
			27/19	6.570	5.342	8.359	1.789	44.1					
			30/22	7.096	5.769	8.912	1.816	44.5					
	7.25	5.8	21/16	5.690	4.626	7.463	1.774	40.1					
			24/17	6.145	4.996	7.908	1.763	40.3					
			27/19	6.637	5.396	8.391	1.754	40.6					
			30/22	7.168	5.827	8.948	1.780	40.9					
	9	8.2	21/16	5.806	4.720	7.520	1.714	38.8					
			24/17	6.270	5.098	7.973	1.703	39.1					
			27/19	6.772	5.506	8.467	1.695	39.4					
			30/22	7.314	5.946	9.034	1.720	39.7					

MT030																									
COOLING									HEATING																
Enter Water	GPM	Pressure Drop PSI	Enter Air Db/Wb°C	Total Capacity kW	Sensible Capacity kW	Heat Rejection kW	Power kW	Exit Water	Enter Water	Entering Air °C	Total Capacity kW	Sensible Capacity kW	Power kW												
5°C	6.9	3.8	<b>OUT OF RANGE</b>						5°C	10	7.55	5.947	1.604												
										15.6	7.10	5.413	1.684												
										20	6.67	4.902	1.768												
	9.2	6.2								26.7	6.29	4.436	1.857												
										10	7.70	6.058	1.644												
										15.6	7.24	5.513	1.726												
	11.4	8.6								20	6.80	4.991	1.812												
										26.7	6.42	4.515	1.903												
										10	8.00	6.335	1.669												
10°C	6.9	3.8	21/16	7.873	6.056	9.506	1.634	20.1	10°C	10	8.21	6.521	1.687												
			24/17	8.502	6.540	10.126	1.624	20.3		15.6	7.71	5.943	1.771												
			27/19	9.183	7.063	10.798	1.616	20.4		20	7.25	5.391	1.859												
			30/22	9.917	7.629	11.557	1.640	20.5		26.7	6.84	4.887	1.952												
	*	*	<b>OUT OF RANGE</b>							10	8.37	6.643	1.729												
										15.6	7.87	6.053	1.815												
										20	7.39	5.489	1.906												
										26.7	6.98	4.975	2.001												
	*	*								21/16	<b>OUT OF RANGE</b>						10	8.70	6.943	1.757					
										24/17							15.6	8.18	6.332	1.845					
										27/19							20	7.68	5.748	1.937					
										30/22							26.7	7.25	5.216	2.034					
15°C	6.9	3.8							21/16	7.70							5.925	9.468	1.764	23.9	15°C	10	9.73	7.995	1.731
									24/17	8.32							6.399	10.073	1.754	24.1		15.6	9.14	7.323	1.818
									27/19	8.98							6.911	10.730	1.745	24.2		20	8.59	6.682	1.909
									30/22	9.70							7.464	11.475	1.771	24.4		26.7	8.10	6.101	2.004
	9.2	6.2	21/16	7.90	6.077	9.594	1.694	21.7	10	9.98							8.178	1.804							
			24/17	8.53	6.564	10.216	1.683	21.9	15.6	9.38							7.487	1.894							
			27/19	9.22	7.089	10.890	1.675	22	20	8.82							6.828	1.989							
			30/22	9.95	7.656	11.653	1.700	22.2	26.7	8.32							6.230	2.089							
	11.4	8.6	21/16	7.98	6.138	9.606	1.626	21.3	10	10.44	8.604	1.832													
			24/17	8.62	6.630	10.235	1.616	21.4	15.6	9.81	7.884	1.924													
			27/19	9.31	7.160	10.916	1.608	21.6	20	9.22	7.198	2.020													
			30/22	10.05	7.733	11.685	1.632	21.7	26.7	8.70	6.575	2.121													

# Specifications - MT030

COOLING									HEATING				
Enter Water	GPM	Pressure Drop PSI	Enter Air Db/Wb°C	Total Capacity kW	Sensible Capacity kW	Heat Rejection kW	Power kW	Exit Water	Enter Water	Entering Air °C	Total Capacity kW	Sensible Capacity kW	Power kW
20°C	6.9	3.8	21/16	7.52	5.781	9.476	1.961	28.7	20°C	10	11.244	11.244	1.776
			24/17	8.12	6.243	10.066	1.949	28.9		15.6	10.568	10.568	1.865
			27/19	8.77	6.743	10.705	1.940	29.1		20	9.932	9.932	1.958
			30/22	9.47	7.282	11.436	1.969	29.3		26.7	9.370	9.370	2.056
	9.2	6.2	21/16	7.71	5.929	9.591	1.883	26.1		10	11.592	11.592	1.880
			24/17	8.32	6.403	10.196	1.871	26.2		15.6	10.895	10.895	1.974
			27/19	8.99	6.916	10.853	1.862	26.4		20	10.240	10.240	2.072
			30/22	9.71	7.469	11.600	1.890	26.6		26.7	9.660	9.660	2.176
	11.4	8.6	21/16	7.79	5.989	9.574	1.789	25.5		10	12.172	12.172	1.908
			24/17	8.41	6.468	10.186	1.778	25.7		15.6	11.440	11.440	2.003
			27/19	9.08	6.985	10.850	1.769	25.9		20	10.752	10.752	2.103
			30/22	9.81	7.544	11.603	1.795	26.1		26.7	10.143	10.143	2.209
25°C	6.9	3.8	21/16	7.33	5.640	9.318	1.986	33	25°C	10	12.37	12.37	1.833
			24/17	7.92	6.091	9.892	1.974	33.2		15.6	11.62	11.62	1.925
			27/19	8.55	6.578	10.516	1.964	33.4		20	10.93	10.93	2.021
			30/22	9.24	7.105	11.230	1.994	33.7		26.7	10.31	10.31	2.122
	9.2	6.2	21/16	7.52	5.654	9.476	1.956	30		10	12.75	12.75	1.936
			24/17	8.12	6.106	10.066	1.944	30.2		15.6	11.98	11.98	2.033
			27/19	8.77	6.595	10.706	1.935	30.4		20	11.26	11.26	2.135
			30/22	9.47	7.122	11.437	1.964	30.6		26.7	10.63	10.63	2.241
	11.4	8.6	21/16	7.63	5.739	9.511	1.878	29.4		10	13.39	13.39	1.965
			24/17	8.24	6.198	10.110	1.867	29.6		15.6	12.58	12.58	2.063
			27/19	8.90	6.694	10.760	1.857	29.8		20	11.83	11.83	2.167
			30/22	9.62	7.396	11.500	1.885	30		26.7	11.16	11.16	2.275
30°C	6.9	3.8	21/16	7.118	5.476	9.230	2.112	37.4	30°C	10	13.36	13.36	1.888
			24/17	7.688	5.914	9.797	2.109	37.7		15.6	12.55	12.55	1.983
			27/19	8.303	6.387	10.402	2.099	37.9		20	11.80	11.80	2.082
			30/22	8.967	6.898	11.098	2.130	38.2		26.7	11.13	11.13	2.186
	9.2	6.2	21/16	7.301	5.616	9.381	2.080	34.5		10	13.77	13.77	1.961
			24/17	7.885	6.065	9.963	2.078	34.7		15.6	12.94	12.94	2.059
			27/19	8.516	6.551	10.584	2.068	35		20	12.16	12.16	2.162
			30/22	9.197	7.075	11.296	2.099	35.2		26.7	11.48	11.48	2.270
	11.4	8.6	21/16	7.410	5.700	9.439	2.028	33.8		10	14.46	14.46	2.024
			24/17	8.003	6.156	10.019	2.016	34		15.6	13.59	13.59	2.125
			27/19	8.643	6.649	10.649	2.006	34.3		20	12.77	12.77	2.232
			30/22	9.335	7.181	11.371	2.036	34.5		26.7	12.05	12.05	2.343
35°C	6.9	3.8	21/16	6.830	5.254	9.186	2.356	43.5					
			24/17	7.376	5.674	9.718	2.341	43.8					
			27/19	7.967	6.128	10.296	2.329	44.1					
			30/22	8.604	6.618	10.968	2.364	44.5					
	9.2	6.2	21/16	6.899	5.307	9.208	2.309	40.1					
			24/17	7.451	5.732	9.746	2.295	40.3					
			27/19	8.047	6.190	10.331	2.284	40.6					
			30/22	8.691	6.685	11.009	2.318	40.9					
	11.4	8.6	21/16	7.040	5.415	9.271	2.231	38.8					
			24/17	7.603	5.849	9.821	2.218	39.1					
			27/19	8.211	6.316	10.418	2.207	39.4					
			30/22	8.868	6.822	11.108	2.240	39.7					

MT036															
COOLING									HEATING						
Enter Water	GPM	Pressure Drop PSI	Enter Air Db/Wb°C	Total Capacity kW	Sensible Capacity kW	Heat Rejection kW	Power kW	Exit Water	Enter Water	Entering Air °C	Total Capacity kW	Sensible Capacity kW	Power kW		
5°C	7.75	3.9	<b>OUT OF RANGE</b>							5°C	10	10.95	8.399	2.552	
											15.6	10.29	7.613	2.680	
											20	9.67	6.859	2.814	
	10.1	6.2									26.7	9.13	6.171	2.955	
											10	11.17	8.554	2.616	
											15.6	10.50	7.751	2.747	
	12.7	8.7									20	9.87	6.983	2.884	
											26.7	9.31	6.280	3.029	
											10	11.61	8.952	2.656	
10°C	7.75	3.9	21/16	10.203	8.295	12.653	2.449	20.2	10°C	10	11.90	9.220	2.684		
			24/17	11.020	8.959	13.454	2.434	20.4		15.6	11.19	8.369	2.818		
			27/19	11.901	9.676	14.324	2.422	20.5		20	10.51	7.555	2.959		
			30/22	12.853	10.450	15.312	2.459	20.6		26.7	9.92	6.812	3.107		
	*	*	<b>OUT OF RANGE</b>							10	12.14	9.391	2.751		
										15.6	11.41	8.523	2.889		
										20	10.72	7.692	3.033		
										26.7	10.12	6.933	3.185		
	*	*								10	12.62	9.822	2.796		
										15.6	11.86	8.923	2.936		
										20	11.15	8.063	3.082		
										26.7	10.51	7.278	3.237		
	15°C	7.75	3.9	21/16	9.98	8.117	12.629	2.645		23.9	15°C	10	14.11	11.350	2.755
				24/17	10.78	8.766	13.412	2.629		24.1		15.6	13.26	10.364	2.893
				27/19	11.65	9.468	14.261	2.616		24.2		20	12.46	9.422	3.038
30/22				12.58	10.225	15.232	2.655	24.4	26.7	11.75		8.565	3.190		
10.1		6.2	21/16	10.24	8.325	12.779	2.540	21.7	10	14.48		11.606	2.871		
			24/17	11.06	8.991	13.583	2.524	21.9	15.6	13.61		10.591	3.015		
			27/19	11.94	9.710	14.455	2.511	22	20	12.79		9.622	3.166		
			30/22	12.90	10.487	15.448	2.549	22.2	26.7	12.06		8.740	3.324		
12.7		8.7	21/16	10.34	8.409	12.781	2.438	21.3	10	15.14		12.219	2.916		
			24/17	11.17	9.081	13.593	2.423	21.4	15.6	14.22		11.163	3.062		
			27/19	12.06	9.808	14.475	2.411	21.6	20	13.37		10.154	3.215		
			30/22	13.03	10.592	15.476	2.447	21.7	26.7	12.61		9.237	3.376		

# Specifications - MT036

COOLING									HEATING				
Enter Water	GPM	Pressure Drop PSI	Enter Air Db/Wb°C	Total Capacity kW	Sensible Capacity kW	Heat Rejection kW	Power kW	Exit Water	Enter Water	Entering Air °C	Total Capacity kW	Sensible Capacity kW	Power kW
20°C	7.75	3.9	21/16	9.74	7.919	12.681	2.941	28.7	20°C	10	16.308	13.481	2.827
			24/17	10.52	8.552	13.442	2.923	28.9		15.6	15.327	12.359	2.968
			27/19	11.36	9.237	14.269	2.908	29.1		20	14.405	11.288	3.117
			30/22	12.27	9.976	15.222	2.952	29.3		26.7	13.590	10.317	3.273
	10.1	6.2	21/16	9.99	8.122	12.813	2.823	26.1		10	16.812	13.821	2.991
			24/17	10.79	8.772	13.595	2.806	26.2		15.6	15.801	12.660	3.141
			27/19	11.65	9.473	14.444	2.792	26.4		20	14.851	11.553	3.298
			30/22	12.58	10.231	15.418	2.834	26.6		26.7	14.010	10.547	3.463
	12.7	8.7	21/16	10.09	8.204	12.772	2.682	25.5		10	17.653	14.617	3.036
			24/17	10.90	8.860	13.563	2.665	25.7		15.6	16.591	13.403	3.188
			27/19	11.77	9.569	14.422	2.652	25.9		20	15.593	12.246	3.348
			30/22	12.71	10.334	15.403	2.692	26.1		26.7	14.711	11.196	3.515
25°C	7.75	3.9	21/16	9.50	7.726	12.481	2.978	33	25°C	10	17.94	15.021	2.917
			24/17	10.26	8.344	13.223	2.960	33.2		15.6	16.86	13.796	3.063
			27/19	11.08	9.011	14.029	2.945	33.4		20	15.85	12.629	3.216
			30/22	11.97	9.732	14.960	2.989	33.7		26.7	14.95	11.571	3.377
	10.1	6.2	21/16	9.75	7.924	12.680	2.933	30		10	18.49	15.412	3.081
			24/17	10.53	8.558	13.441	2.915	30.2		15.6	17.38	14.146	3.235
			27/19	11.37	9.242	14.269	2.901	30.4		20	16.34	12.939	3.397
			30/22	12.28	9.982	15.222	2.944	30.6		26.7	15.41	11.844	3.567
	12.7	8.7	21/16	9.89	8.043	12.708	2.816	29.4		10	19.42	16.291	3.127
			24/17	10.68	8.686	13.483	2.799	29.6		15.6	18.25	14.966	3.284
			27/19	11.54	9.381	14.323	2.785	29.8		20	17.15	13.704	3.448
			30/22	12.46	10.132	15.288	2.826	30		26.7	16.18	12.561	3.620
30°C	7.75	3.9	21/16	9.226	7.501	12.392	3.166	37.4	30°C	10	19.37	16.369	3.005
			24/17	9.964	8.101	13.127	3.163	37.7		15.6	18.21	15.053	3.155
			27/19	10.761	8.749	13.908	3.147	37.9		20	17.11	13.800	3.313
			30/22	11.622	9.449	14.816	3.194	38.2		26.7	16.14	12.666	3.479
	10.1	6.2	21/16	9.462	7.693	12.582	3.119	34.5		10	19.97	16.852	3.121
			24/17	10.219	8.309	13.335	3.116	34.7		15.6	18.77	15.494	3.277
			27/19	11.037	8.973	14.138	3.100	35		20	17.64	14.201	3.441
			30/22	11.920	9.691	15.067	3.147	35.2		26.7	16.64	13.031	3.613
	12.7	8.7	21/16	9.604	7.808	12.646	3.041	33.8		10	20.97	17.750	3.221
			24/17	10.373	8.433	13.395	3.023	34		15.6	19.71	16.328	3.382
			27/19	11.203	9.108	14.210	3.007	34.3		20	18.52	14.973	3.551
			30/22	12.099	9.836	15.151	3.053	34.5		26.7	17.48	13.747	3.729
35°C	7.75	3.9	21/16	8.852	7.197	12.384	3.532	43.5					
			24/17	9.560	7.773	13.070	3.510	43.8					
			27/19	10.325	8.395	13.818	3.492	44.1					
			30/22	11.151	9.066	14.696	3.545	44.5					
	10.1	6.2	21/16	8.942	7.270	12.404	3.462	40.1					
			24/17	9.657	7.851	13.098	3.441	40.3					
			27/19	10.430	8.479	13.854	3.424	40.6					
			30/22	11.264	9.158	14.739	3.475	40.9					
	12.7	8.7	21/16	9.124	7.418	12.469	3.345	38.8					
			24/17	9.854	8.011	13.179	3.325	39.1					
			27/19	10.642	8.652	13.951	3.308	39.4					
			30/22	11.494	9.345	14.852	3.358	39.7					

MT043																									
COOLING									HEATING																
Enter Water	GPM	Pressure Drop PSI	Enter Air Db/Wb°C	Total Capacity kW	Sensible Capacity kW	Heat Rejection kW	Power kW	Exit Water	Enter Water	Entering Air °C	Total Capacity kW	Sensible Capacity kW	Power kW												
5°C	9.2	2.9	<b>OUT OF RANGE</b>						5°C	10	11.24	8.736	2.500												
										15.6	10.56	7.935	2.625												
										20	9.92	7.168	2.756												
	12.2	4.7								26.7	9.36	6.469	2.894												
										10	11.46	8.898	2.563												
										15.6	10.77	8.080	2.691												
	15.25	6.5								20	10.12	7.298	2.825												
										26.7	9.55	6.584	2.967												
										10	11.91	9.308	2.602												
10°C	9.2	2.9	21/16	11.112	9.034	13.555	2.443	20.2	10°C	10	12.21	9.584	2.629												
			24/17	12.001	9.757	14.429	2.428	20.4		15.6	11.48	8.718	2.760												
			27/19	12.961	10.538	15.375	2.414	20.5		20	10.79	7.889	2.899												
			30/22	13.802	11.221	16.252	2.450	20.6		26.7	10.18	7.134	3.043												
	*	*	<b>OUT OF RANGE</b>							10	12.46	9.762	2.695												
										15.6	11.71	8.878	2.829												
										20	11.00	8.033	2.971												
										26.7	10.38	7.261	3.120												
	*	*								21/16	<b>OUT OF RANGE</b>						10	12.95	10.207	2.739					
										24/17							15.6	12.17	9.291	2.876					
										27/19							20	11.44	8.416	3.019					
										30/22							26.7	10.79	7.618	3.170					
15°C	9.2	2.9							21/16	10.87							8.840	13.512	2.639	23.9	15°C	10	14.47	11.773	2.699
									24/17	11.74							9.547	14.365	2.623	24.1		15.6	13.60	10.768	2.834
									27/19	12.68							10.311	15.289	2.607	24.2		20	12.78	9.808	2.976
									30/22	13.51							10.980	16.151	2.646	24.4		26.7	12.06	8.936	3.124
	12.2	4.7	21/16	11.15	9.066	13.685	2.533	21.7	10	14.85							12.041	2.812							
			24/17	12.04	9.792	14.562	2.518	21.9	15.6	13.96							11.007	2.953							
			27/19	13.01	10.575	15.510	2.503	22	20	13.12							10.019	3.101							
			30/22	13.85	11.261	16.392	2.540	22.2	26.7	12.38							9.122	3.256							
	15.25	6.5	21/16	11.26	9.158	13.696	2.432	21.3	10	15.53	12.672	2.856													
			24/17	12.16	9.890	14.582	2.417	21.4	15.6	14.59	11.595	2.999													
			27/19	13.14	10.681	15.541	2.403	21.6	20	13.72	10.568	3.149													
			30/22	13.99	11.374	16.429	2.439	21.7	26.7	12.94	9.634	3.307													

# Specifications - MT043

COOLING									HEATING				
Enter Water	GPM	Pressure Drop PSI	Enter Air Db/Wb°C	Total Capacity kW	Sensible Capacity kW	Heat Rejection kW	Power kW	Exit Water	Enter Water	Entering Air °C	Total Capacity kW	Sensible Capacity kW	Power kW
20°C	9.2	2.9	21/16	10.87	8.624	13.541	2.933	28.7	20°C	10	16.732	13.963	2.769
			24/17	11.74	9.314	14.372	2.915	28.9		15.6	15.725	12.818	2.907
			27/19	12.68	10.059	15.271	2.898	29.1		20	14.779	11.727	3.053
			30/22	13.51	10.712	16.117	2.941	29.3		26.7	13.943	10.737	3.205
	12.2	4.7	21/16	11.15	8.845	13.696	2.816	26.1		10	17.249	14.319	2.930
			24/17	12.04	9.553	14.549	2.799	26.2		15.6	16.212	13.135	3.077
			27/19	13.01	10.317	15.472	2.782	26.4		20	15.236	12.006	3.230
			30/22	13.85	10.987	16.337	2.824	26.6		26.7	14.374	10.982	3.392
	15.25	6.5	21/16	11.26	8.934	13.664	2.675	25.5		10	18.112	15.137	2.974
			24/17	12.16	9.649	14.527	2.659	25.7		15.6	17.022	13.899	3.123
			27/19	13.14	10.421	15.460	2.643	25.9		20	15.998	12.719	3.279
			30/22	13.99	11.097	16.332	2.682	26.1		26.7	15.093	11.650	3.443
25°C	9.2	2.9	21/16	10.61	8.414	13.319	2.970	33	25°C	10	18.40	15.547	2.858
			24/17	11.46	9.087	14.129	2.952	33.2		15.6	17.30	14.297	3.000
			27/19	12.37	9.814	15.006	2.935	33.4		20	16.26	13.107	3.150
			30/22	13.18	10.451	15.833	2.979	33.7		26.7	15.34	12.029	3.308
	12.2	4.7	21/16	10.88	8.630	13.540	2.926	30		10	18.97	15.956	3.018
			24/17	11.75	9.320	14.371	2.908	30.2		15.6	17.83	14.664	3.169
			27/19	12.69	10.066	15.271	2.891	30.4		20	16.76	13.433	3.327
			30/22	13.51	10.719	16.118	2.934	30.6		26.7	15.81	12.318	3.494
	15.25	6.5	21/16	10.99	8.759	13.582	2.809	29.4		10	19.92	16.859	3.063
			24/17	11.87	9.460	14.427	2.792	29.6		15.6	18.72	15.508	3.216
			27/19	12.82	10.217	15.341	2.775	29.8		20	17.60	14.221	3.377
			30/22	13.65	10.879	16.198	2.817	30		26.7	16.60	13.056	3.546
30°C	9.2	2.9	21/16	10.35	8.169	13.206	3.158	37.4	30°C	10	19.88	16.934	2.943
			24/17	11.18	8.822	14.006	3.155	37.7		15.6	18.68	15.591	3.090
			27/19	12.07	9.528	14.856	3.136	37.9		20	17.56	14.313	3.245
			30/22	12.85	10.146	15.663	3.183	38.2		26.7	16.56	13.157	3.407
	12.2	4.7	21/16	10.61	8.378	13.417	3.111	34.5		10	20.49	17.435	3.057
			24/17	11.46	9.048	14.238	3.108	34.7		15.6	19.26	16.049	3.210
			27/19	12.38	9.772	15.110	3.090	35		20	18.10	14.730	3.371
			30/22	13.18	10.407	15.936	3.136	35.2		26.7	17.08	13.537	3.539
	15.25	6.5	21/16	10.77	8.504	13.493	3.034	33.8		10	21.52	18.361	3.155
			24/17	11.64	9.184	14.312	3.015	34		15.6	20.22	16.909	3.313
			27/19	12.57	9.919	15.197	2.997	34.3		20	19.01	15.527	3.479
			30/22	13.38	10.563	16.034	3.042	34.5		26.7	17.93	14.278	3.653
35°C	9.2	2.9	21/16	10.048	7.838	13.163	3.523	43.5					
			24/17	10.851	8.465	13.913	3.501	43.8					
			27/19	11.720	9.142	14.725	3.480	44.1					
			30/22	12.480	9.735	15.507	3.532	44.5					
	12.2	4.7	21/16	10.305	7.917	13.192	3.454	40.1					
			24/17	11.130	8.550	13.950	3.433	40.3					
			27/19	12.020	9.235	14.771	3.412	40.6					
			30/22	12.800	9.834	15.559	3.463	40.9					
	15.25	6.5	21/16	10.460	8.079	13.274	3.337	38.8					
			24/17	11.297	8.725	14.048	3.316	39.1					
			27/19	12.200	9.423	14.887	3.297	39.4					
			30/22	12.992	10.034	15.689	3.346	39.7					

MT052																									
COOLING									HEATING																
Enter Water	GPM	Pressure Drop PSI	Enter Air Db/Wb°C	Total Capacity kW	Sensible Capacity kW	Heat Rejection kW	Power kW	Exit Water	Enter Water	Entering Air °C	Total Capacity kW	Sensible Capacity kW	Power kW												
5°C	11.2	5	<b>OUT OF RANGE</b>						5°C	10	12.70	9.876	2.827												
										15.6	11.94	8.970	2.968												
										20	11.22	8.104	3.116												
	14.8	7.9								26.7	10.59	7.313	3.272												
										10	12.96	10.059	2.897												
										15.6	12.18	9.135	3.042												
	18.6	11								20	11.44	8.250	3.194												
										26.7	10.80	7.443	3.354												
										10	13.46	10.523	2.941												
10°C	11.2	5	21/16	13.148	10.689	15.934	2.786	20.2	10°C	10	13.81	10.834	2.972												
			24/17	14.200	11.545	16.969	2.769	20.4		15.6	12.98	9.855	3.121												
			27/19	15.336	12.468	18.091	2.756	20.5		20	12.20	8.919	3.277												
			30/22	16.563	13.466	19.360	2.797	20.6		26.7	11.51	8.065	3.441												
	*	*	<b>OUT OF RANGE</b>							10	14.08	11.036	3.047												
										15.6	13.24	10.037	3.199												
										20	12.44	9.081	3.359												
										26.7	11.74	8.209	3.527												
	*	*								21/16	<b>OUT OF RANGE</b>						10	14.64	11.539	3.096					
										24/17							15.6	13.75	10.504	3.251					
										27/19							20	12.93	9.514	3.414					
										30/22							26.7	12.20	8.612	3.584					
15°C	11.2	5							21/16	12.86							10.459	15.874	3.009	23.8	15°C	10	16.36	13.310	3.051
									24/17	13.89							11.296	16.885	2.991	24		15.6	15.38	12.173	3.204
									27/19	15.01							12.200	17.982	2.976	24.2		20	14.45	11.088	3.364
									30/22	16.21							13.176	19.227	3.021	24.3		26.7	13.63	10.101	3.532
	14.8	7.9	21/16	13.19	10.728	16.084	2.889	21.7	10	16.79							13.612	3.180							
			24/17	14.25	11.586	17.122	2.871	21.8	15.6	15.78							12.443	3.339							
			27/19	15.39	12.513	18.247	2.857	22	20	14.83							11.327	3.506							
			30/22	16.62	13.514	19.522	2.900	22.1	26.7	13.99							10.312	3.681							
	18.6	11	21/16	13.33	10.835	16.101	2.773	21.2	10	17.56	14.326	3.229													
			24/17	14.39	11.702	17.150	2.756	21.4	15.6	16.50	13.109	3.391													
			27/19	15.55	12.638	18.288	2.743	21.5	20	15.51	11.947	3.560													
			30/22	16.79	13.649	19.573	2.784	21.7	26.7	14.63	10.891	3.738													

# Specifications - MT052

COOLING									HEATING				
Enter Water	GPM	Pressure Drop PSI	Enter Air Db/Wb°C	Total Capacity kW	Sensible Capacity kW	Heat Rejection kW	Power kW	Exit Water	Enter Water	Entering Air °C	Total Capacity kW	Sensible Capacity kW	Power kW
20°C	11.2	5	21/16	12.55	10.204	15.896	3.345	28.6	20°C	10	18.915	15.785	3.131
			24/17	13.56	11.021	16.880	3.325	28.8		15.6	17.778	14.490	3.287
			27/19	14.64	11.902	17.948	3.308	29		20	16.708	13.257	3.452
			30/22	15.81	12.854	19.169	3.358	29.2		26.7	15.763	12.138	3.624
	14.8	7.9	21/16	12.87	10.466	16.084	3.211	26		10	19.500	16.188	3.313
			24/17	13.90	11.303	17.095	3.192	26.2		15.6	18.327	14.849	3.478
			27/19	15.02	12.207	18.191	3.176	26.4		20	17.225	13.573	3.652
			30/22	16.22	13.184	19.440	3.223	26.5		26.7	16.250	12.415	3.835
	18.6	11	21/16	13.00	10.571	16.053	3.051	25.5		10	20.475	17.113	3.363
			24/17	14.04	11.417	17.075	3.032	25.6		15.6	19.244	15.713	3.531
			27/19	15.17	12.330	18.183	3.017	25.8		20	18.086	14.379	3.707
			30/22	16.38	13.316	19.442	3.062	26		26.7	17.063	13.170	3.893
25°C	11.2	5	21/16	12.25	9.955	15.633	3.388	32.9	25°C	10	20.81	17.576	3.231
			24/17	13.22	10.752	16.592	3.367	33.1		15.6	19.56	16.163	3.392
			27/19	14.28	11.612	17.633	3.350	33.3		20	18.38	14.817	3.562
			30/22	15.43	12.541	18.826	3.400	33.6		26.7	17.34	13.599	3.740
	14.8	7.9	21/16	12.56	10.211	15.896	3.337	29.9		10	21.45	18.038	3.412
			24/17	13.56	11.027	16.880	3.316	30.1		15.6	20.16	16.577	3.583
			27/19	14.65	11.910	17.949	3.300	30.3		20	18.95	15.186	3.762
			30/22	15.82	12.862	19.170	3.349	30.5		26.7	17.88	13.925	3.950
	18.6	11	21/16	12.75	10.364	15.951	3.203	29.3		10	22.52	19.060	3.463
			24/17	13.77	11.193	16.951	3.184	29.5		15.6	21.17	17.532	3.637
			27/19	14.87	12.088	18.036	3.168	29.7		20	19.89	16.076	3.818
			30/22	16.06	13.055	19.273	3.215	29.9		26.7	18.77	14.759	4.009
30°C	11.2	5	21/16	11.888	9.665	15.490	3.601	37.3	30°C	10	22.47	19.144	3.328
			24/17	12.840	10.439	16.437	3.598	37.6		15.6	21.12	17.626	3.494
			27/19	13.867	11.274	17.447	3.580	37.8		20	19.85	16.181	3.669
			30/22	14.976	12.176	18.610	3.634	38.1		26.7	18.73	14.874	3.852
	14.8	7.9	21/16	12.193	9.913	15.742	3.548	34.4		10	23.17	19.710	3.457
			24/17	13.169	10.706	16.713	3.545	34.6		15.6	21.77	18.144	3.629
			27/19	14.222	11.563	17.749	3.527	34.9		20	20.46	16.652	3.811
			30/22	15.360	12.488	18.940	3.580	35.1		26.7	19.31	15.304	4.001
	18.6	11	21/16	12.376	10.062	15.836	3.460	33.7		10	24.32	20.757	3.567
			24/17	13.366	10.867	16.805	3.438	33.9		15.6	22.86	19.116	3.746
			27/19	14.436	11.736	17.857	3.421	34.2		20	21.49	17.554	3.933
			30/22	15.590	12.675	19.063	3.473	34.4		26.7	20.27	16.141	4.130
35°C	11.2	5	21/16	11.407	9.274	15.424	4.017	43.4					
			24/17	12.320	10.016	16.312	3.993	43.7					
			27/19	13.305	10.817	17.278	3.973	44					
			30/22	14.370	11.683	18.402	4.033	44.3					
	14.8	7.9	21/16	11.522	9.368	15.461	3.939	39.9					
			24/17	12.444	10.117	16.359	3.915	40.2					
			27/19	13.440	10.926	17.335	3.895	40.5					
			30/22	14.515	11.801	18.468	3.954	40.8					
	18.6	11	21/16	11.757	9.559	15.563	3.806	38.7					
			24/17	12.698	10.324	16.480	3.782	39					
			27/19	13.714	11.149	17.477	3.763	39.3					
			30/22	14.811	12.041	18.631	3.820	39.6					

MT062																											
COOLING									HEATING																		
Enter Water	GPM	Pressure Drop PSI	Enter Air Db/Wb°C	Total Capacity kW	Sensible Capacity kW	Heat Rejection kW	Power kW	Exit Water	Enter Water	Entering Air °C	Total Capacity kW	Sensible Capacity kW	Power kW														
5°C	12.7	4.7	<b>OUT OF RANGE</b>						5°C	10	14.01	10.762	3.250														
										15.6	13.17	9.757	3.413														
										20	12.38	8.794	3.584														
	16.9	7.5								26.7	11.68	7.914	3.763														
										10	14.29	10.961	3.332														
										15.6	13.43	9.935	3.498														
	21.2	10.5								20	12.62	8.952	3.673														
										26.7	11.91	8.053	3.857														
										10	14.85	11.471	3.382														
10°C	12.7	4.7	21/16	14.997	12.193	18.168	3.171	20.2	10°C	10	15.23	11.813	3.418														
			24/17	16.197	13.168	19.398	3.202	20.4		15.6	14.31	10.726	3.589														
			27/19	17.492	14.222	20.742	3.250	20.5		20	13.45	9.685	3.768														
			30/22	18.892	15.359	22.190	3.299	20.6		26.7	12.69	8.735	3.957														
	*	*	<b>OUT OF RANGE</b>							10	15.54	12.032	3.503														
										15.6	14.60	10.922	3.679														
										20	13.72	9.860	3.863														
										26.7	12.95	8.890	4.056														
	*	*								21/16	<b>OUT OF RANGE</b>						10	16.14	12.584	3.560							
										24/17							15.6	15.17	11.435	3.738							
										27/19							20	14.26	10.335	3.925							
										30/22							26.7	13.45	9.332	4.122							
	15°C	12.7								4.7							21/16	14.67	11.930	18.098	3.424	24	15°C	10	18.05	14.540	3.509
																	24/17	15.85	12.885	19.306	3.458	24.1		15.6	16.96	13.278	3.684
																	27/19	17.12	13.915	20.626	3.510	24.3		20	15.94	12.074	3.869
30/22									18.49								15.029	22.048	3.562	24.5	26.7	15.04		10.978	4.062		
16.9		7.5	21/16	15.05	12.236	18.338	3.287	21.8	10	18.52							14.867	3.657									
			24/17	16.25	13.215	19.574	3.320	21.9	15.6	17.41							13.570	3.839									
			27/19	17.55	14.272	20.924	3.369	22.1	20	16.36							12.331	4.031									
			30/22	18.96	15.414	22.379	3.420	22.2	26.7	15.44							11.203	4.233									
21.2		10.5	21/16	15.20	12.359	18.357	3.156	21.3	10	19.37	15.652	3.714															
			24/17	16.42	13.348	19.605	3.187	21.5	15.6	18.20	14.302	3.899															
			27/19	17.73	14.416	20.966	3.235	21.6	20	17.11	13.012	4.094															
			30/22	19.15	15.569	22.433	3.283	21.8	26.7	16.14	11.839	4.299															

# Specifications - MT062

COOLING									HEATING				
Enter Water	GPM	Pressure Drop PSI	Enter Air Db/Wb°C	Total Capacity kW	Sensible Capacity kW	Heat Rejection kW	Power kW	Exit Water	Enter Water	Entering Air °C	Total Capacity kW	Sensible Capacity kW	Power kW
20°C	12.7	4.7	21/16	14.32	11.639	18.123	3.806	28.8	20°C	10	20.866	17.266	3.600
			24/17	15.46	12.570	19.305	3.844	29		15.6	19.611	15.831	3.780
			27/19	16.70	13.576	20.600	3.901	29.2		20	18.432	14.463	3.969
			30/22	18.03	14.662	21.994	3.960	29.4		26.7	17.388	13.221	4.167
	16.9	7.5	21/16	14.68	11.938	18.337	3.654	26.1		10	21.512	17.702	3.810
			24/17	15.86	12.893	19.548	3.690	26.3		15.6	20.218	16.218	4.000
			27/19	17.13	13.924	20.872	3.745	26.5		20	19.002	14.802	4.200
			30/22	18.50	15.038	22.298	3.801	26.7		26.7	17.926	13.516	4.410
	21.2	10.5	21/16	14.83	12.058	18.302	3.471	25.6		10	22.587	18.721	3.867
			24/17	16.02	13.022	19.523	3.505	25.8		15.6	21.229	17.169	4.060
			27/19	17.30	14.064	20.857	3.558	26		20	19.952	15.689	4.263
			30/22	18.68	15.189	22.294	3.611	26.2		26.7	18.822	14.346	4.476
25°C	12.7	4.7	21/16	13.97	11.355	17.822	3.855	33.1	25°C	10	22.95	19.238	3.715
			24/17	15.08	12.264	18.977	3.892	33.3		15.6	21.57	17.671	3.901
			27/19	16.29	13.245	20.242	3.951	33.5		20	20.27	16.179	4.096
			30/22	17.59	14.304	21.605	4.010	33.8		26.7	19.13	14.826	4.301
	16.9	7.5	21/16	14.33	11.646	18.122	3.797	30.1		10	23.66	19.739	3.924
			24/17	15.47	12.578	19.305	3.834	30.3		15.6	22.24	18.119	4.120
			27/19	16.71	13.584	20.600	3.892	30.5		20	20.90	16.576	4.326
			30/22	18.05	14.671	21.996	3.950	30.7		26.7	19.72	15.176	4.542
	21.2	10.5	21/16	14.54	11.821	18.185	3.645	29.5		10	24.85	20.863	3.983
			24/17	15.70	12.767	19.384	3.681	29.7		15.6	23.35	19.170	4.182
			27/19	16.96	13.788	20.695	3.736	29.9		20	21.95	17.556	4.391
			30/22	18.32	14.891	22.108	3.792	30.1		26.7	20.70	16.094	4.610
30°C	12.7	4.7	21/16	13.560	11.025	17.658	4.098	37.5	30°C	10	24.79	20.962	3.827
			24/17	14.645	11.907	18.805	4.160	37.8		15.6	23.30	19.280	4.018
			27/19	15.817	12.859	20.039	4.222	38		20	21.90	17.678	4.219
			30/22	17.082	13.888	21.367	4.285	38.3		26.7	20.66	16.227	4.430
	16.9	7.5	21/16	13.908	11.307	17.946	4.038	34.6		10	25.56	21.581	3.975
			24/17	15.021	12.212	19.119	4.098	34.8		15.6	24.02	19.845	4.174
			27/19	16.222	13.189	20.382	4.160	35.1		20	22.57	18.192	4.382
			30/22	17.520	14.244	21.742	4.222	35.3		26.7	21.30	16.695	4.601
	21.2	10.5	21/16	14.117	11.477	18.053	3.937	33.9		10	26.83	22.731	4.102
			24/17	15.246	12.395	19.221	3.975	34.1		15.6	25.22	20.912	4.307
			27/19	16.466	13.387	20.500	4.035	34.4		20	23.70	19.180	4.523
			30/22	17.783	14.458	21.878	4.095	34.6		26.7	22.36	17.612	4.749
35°C	12.7	4.7	21/16	13.011	10.578	17.583	4.571	43.7					
			24/17	14.052	11.424	18.668	4.616	44					
			27/19	15.176	12.338	19.862	4.686	44.3					
			30/22	16.390	13.325	21.146	4.756	44.6					
	16.9	7.5	21/16	13.143	10.685	17.624	4.482	40.2					
			24/17	14.194	11.540	18.720	4.526	40.4					
			27/19	15.329	12.463	19.923	4.594	40.7					
			30/22	16.556	13.460	21.218	4.663	41					
	21.2	10.5	21/16	13.411	10.903	17.741	4.330	39					
			24/17	14.484	11.775	18.856	4.373	39.2					
			27/19	15.642	12.717	20.081	4.438	39.5					
			30/22	16.894	13.735	21.399	4.505	39.8					

MT072															
COOLING									HEATING						
Enter Water	GPM	Pressure Drop PSI	Enter Air Db/Wb°C	Total Capacity kW	Sensible Capacity kW	Heat Rejection kW	Power kW	Exit Water	Enter Water	Entering Air °C	Total Capacity kW	Sensible Capacity kW	Power kW		
5°C	15.2	6.1	<b>OUT OF RANGE</b>						5°C	10	16.26	12.485	3.774		
										15.6	15.28	11.318	3.962		
										20	14.36	10.201	4.161		
	20.25	9.8								26.7	13.55	9.180	4.369		
										10	16.58	12.716	3.868		
										15.6	15.59	11.525	4.062		
	25.3	13.7								20	14.65	10.384	4.265		
										26.7	13.82	9.342	4.478		
										10	17.23	13.307	3.927		
10°C	15.2	6.1	21/16	17.575	13.519	21.403	3.828	20.2	10°C	10	17.67	13.704	3.968		
			24/17	18.981	14.601	22.786	3.804	20.4		15.6	16.61	12.443	4.167		
			27/19	20.500	15.769	24.285	3.785	20.5		20	15.61	11.236	4.375		
			30/22	22.140	17.031	25.982	3.842	20.6		26.7	14.73	10.133	4.594		
	*	*	<b>OUT OF RANGE</b>							10	18.03	13.959	4.068		
										15.6	16.94	12.671	4.271		
										20	15.92	11.438	4.484		
										26.7	15.02	10.313	4.709		
	*	*								10	18.73	14.599	4.134		
										15.6	17.61	13.266	4.340		
										20	16.55	11.990	4.557		
										26.7	15.61	10.825	4.785		
	15°C	15.2	6.1	21/16	17.20	13.228	21.331	4.134		24	15°C	10	20.94	16.868	4.074
				24/17	18.57	14.287	22.681	4.109		24.2		15.6	19.68	15.405	4.278
				27/19	20.06	15.430	24.147	4.088		24.4		20	18.50	14.007	4.492
				30/22	21.66	16.664	25.813	4.150		24.5		26.7	17.45	12.735	4.716
20.25		9.8	21/16	17.64	13.568	21.607	3.969	21.8	10	21.49		17.248	4.245		
			24/17	19.05	14.653	22.993	3.944	22	15.6	20.20		15.743	4.457		
			27/19	20.57	15.825	24.498	3.925	22.2	20	18.99		14.305	4.680		
			30/22	22.22	17.091	26.202	3.984	22.3	26.7	17.91		12.996	4.914		
25.3		13.7	21/16	17.82	13.704	21.625	3.810	21.4	10	22.47		18.159	4.311		
			24/17	19.24	14.800	23.027	3.787	21.6	15.6	21.12		16.592	4.527		
			27/19	20.78	15.984	24.547	3.768	21.7	20	19.85		15.095	4.753		
			30/22	25.19	19.378	29.015	3.824	21.9	26.7	18.73		13.734	4.991		

# Specifications - MT072

COOLING									HEATING				
Enter Water	GPM	Pressure Drop PSI	Enter Air Db/Wb°C	Total Capacity kW	Sensible Capacity kW	Heat Rejection kW	Power kW	Exit Water	Enter Water	Entering Air °C	Total Capacity kW	Sensible Capacity kW	Power kW
20°C	15.2	6.1	21/16	16.78	12.906	21.373	4.595	28.8	20°C	10	24.212	20.032	4.180
			24/17	18.12	13.938	22.687	4.567	29		15.6	22.755	18.367	4.389
			27/19	19.57	15.053	24.114	4.545	29.2		20	21.387	16.779	4.608
			30/22	21.13	16.257	25.747	4.613	29.4		26.7	20.176	15.338	4.838
	20.25	9.8	21/16	17.21	13.237	21.619	4.412	26.2		10	24.960	20.538	4.423
			24/17	18.58	14.296	22.969	4.385	26.4		15.6	23.459	18.815	4.644
			27/19	20.07	15.439	24.434	4.363	26.6		20	22.048	17.172	4.876
			30/22	21.68	16.674	26.105	4.428	26.8		26.7	20.800	15.680	5.120
	25.3	13.7	21/16	17.38	13.370	21.572	4.191	25.7		10	26.208	21.719	4.489
			24/17	18.77	14.439	22.936	4.165	25.9		15.6	24.632	19.918	4.714
			27/19	20.27	15.594	24.417	4.145	26		20	23.150	18.201	4.949
			30/22	24.58	18.905	28.783	4.207	26.2		26.7	21.840	16.643	5.197
25°C	15.2	6.1	21/16	16.37	12.591	21.022	4.654	33.2	25°C	10	26.63	22.319	4.313
			24/17	17.68	13.598	22.303	4.625	33.4		15.6	25.03	20.502	4.529
			27/19	19.09	14.686	23.694	4.602	33.6		20	23.53	18.770	4.755
			30/22	20.62	15.861	25.290	4.671	33.9		26.7	22.19	17.200	4.993
	20.25	9.8	21/16	16.79	12.914	21.372	4.584	30.1		10	27.46	22.901	4.556
			24/17	18.13	13.947	22.687	4.556	30.4		15.6	25.80	21.022	4.783
			27/19	19.58	15.063	24.115	4.533	30.6		20	24.25	19.230	5.022
			30/22	21.15	16.268	25.749	4.601	30.8		26.7	22.88	17.606	5.274
	25.3	13.7	21/16	17.04	13.108	21.440	4.401	29.5		10	28.83	24.205	4.624
			24/17	18.40	14.156	22.777	4.374	29.7		15.6	27.10	22.240	4.855
			27/19	19.88	15.289	24.227	4.352	30		20	25.47	20.368	5.098
			30/22	24.09	18.534	28.512	4.417	30.2		26.7	24.02	18.671	5.353
30°C	15.2	6.1	21/16	15.891	12.224	20.839	4.948	37.6	30°C	10	28.76	24.321	4.443
			24/17	17.163	13.202	22.105	4.943	37.9		15.6	27.03	22.368	4.665
			27/19	18.536	14.258	23.454	4.918	38.1		20	25.41	20.509	4.898
			30/22	20.019	15.399	25.010	4.992	38.4		26.7	23.97	18.826	5.143
	20.25	9.8	21/16	16.299	12.538	21.173	4.874	34.7		10	29.65	25.038	4.615
			24/17	17.603	13.541	22.472	4.870	34.9		15.6	27.87	23.024	4.845
			27/19	19.011	14.624	23.856	4.845	35.2		20	26.19	21.105	5.088
			30/22	20.532	15.794	25.450	4.918	35.4		26.7	24.71	19.368	5.342
	25.3	13.7	21/16	16.543	12.726	21.296	4.753	34		10	31.14	26.373	4.763
			24/17	17.867	13.744	22.590	4.723	34.2		15.6	29.26	24.262	5.001
			27/19	19.296	14.843	23.996	4.700	34.5		20	27.50	22.252	5.251
			30/22	23.393	17.995	28.163	4.770	34.7		26.7	25.95	20.433	5.513
35°C	15.2	6.1	21/16	15.248	11.729	20.767	5.519	43.8					
			24/17	16.468	12.668	21.953	5.485	44.1					
			27/19	17.785	13.681	23.243	5.458	44.4					
			30/22	21.561	16.585	27.101	5.540	44.7					
	20.25	9.8	21/16	15.402	11.848	20.813	5.411	40.3					
			24/17	16.634	12.795	22.012	5.378	40.6					
			27/19	17.965	13.819	23.316	5.351	40.8					
			30/22	21.779	16.753	27.210	5.431	41.1					
	25.3	13.7	21/16	15.716	12.089	20.944	5.228	39.1					
			24/17	16.974	13.057	22.169	5.196	39.3					
			27/19	18.331	14.101	23.501	5.170	39.6					
			30/22	22.223	17.095	27.471	5.248	39.9					

<b>ELECTRICAL</b>							
<b>Model</b>	<b>Power</b>	<b>Compressor</b>		<b>Fan Motor</b>	<b>Total Amps</b>	<b>Min/Max Voltage V</b>	<b>Max CCT</b>
		<b>RLA</b>	<b>LRA</b>	<b>FLA</b>			
MT009	220V/60/1	3.6	17.8	0.39	4	198/264	10
MT013		5.4	26.1	0.52	5.9		15
MT016		6.25	27.4	0.85	7.1		15
MT019		7.75	31.8	0.94	8.7		25
MT024		9.3	36.8	1.11	10.4		25
MT030		11.9	61	1.4	13.3		32
MT036		13.1	68.2	2.07	15.2		32
MT043		6.3	44	2	8.3		25
MT052		7.2	50	3.82	11		25
MT062		8.2	57	4.06	12.3		32
MT072		10.1	73	5.82	15.9		32

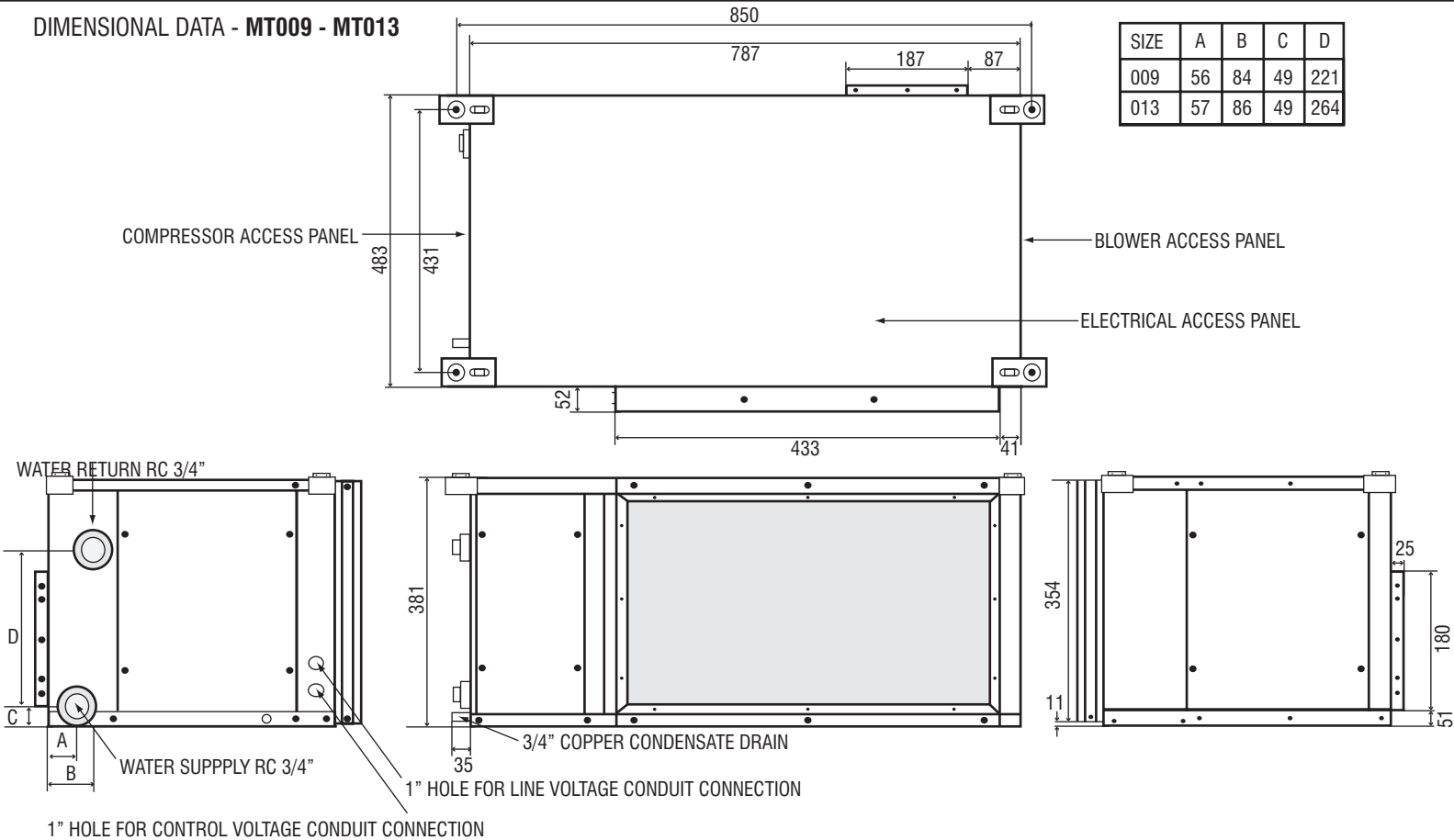
Model	Air Flow CFM	EXTERNAL STATIC PRESSURE Pa							
		12	20	30	50	80	100	120	150
MT009	300	320	310	310	280	/	/	/	/
MT013	450	500	485	465	410	/	/	/	/
MT016	690	740	720	700	625	/	/	/	/
MT019	700	775	745	720	630	/	/	/	/
MT024	880	920	910	880	850	/	/	/	/
MT030	1010	/	/	1040	1015	940	890	/	/
MT036	1300	/	/	1330	1300	1230	1175	/	/
MT043	1390	/	/	1430	1390	1300	1190	/	/
MT052	1675	/	/	/	1750	1660	1170	1580	1525
MT062	1825	/	/	/	1890	1840	1810	1770	1710
MT072	1950	/	/	/	2040	1940	1845	1820	1770

LIMITS	Water loop		Ground loop	
	Cooling	Heating	Cooling	Heating
Return Air	16~32	10~30	16~32	10~30
Return Water	13~43	5~32	10~43	-5~32

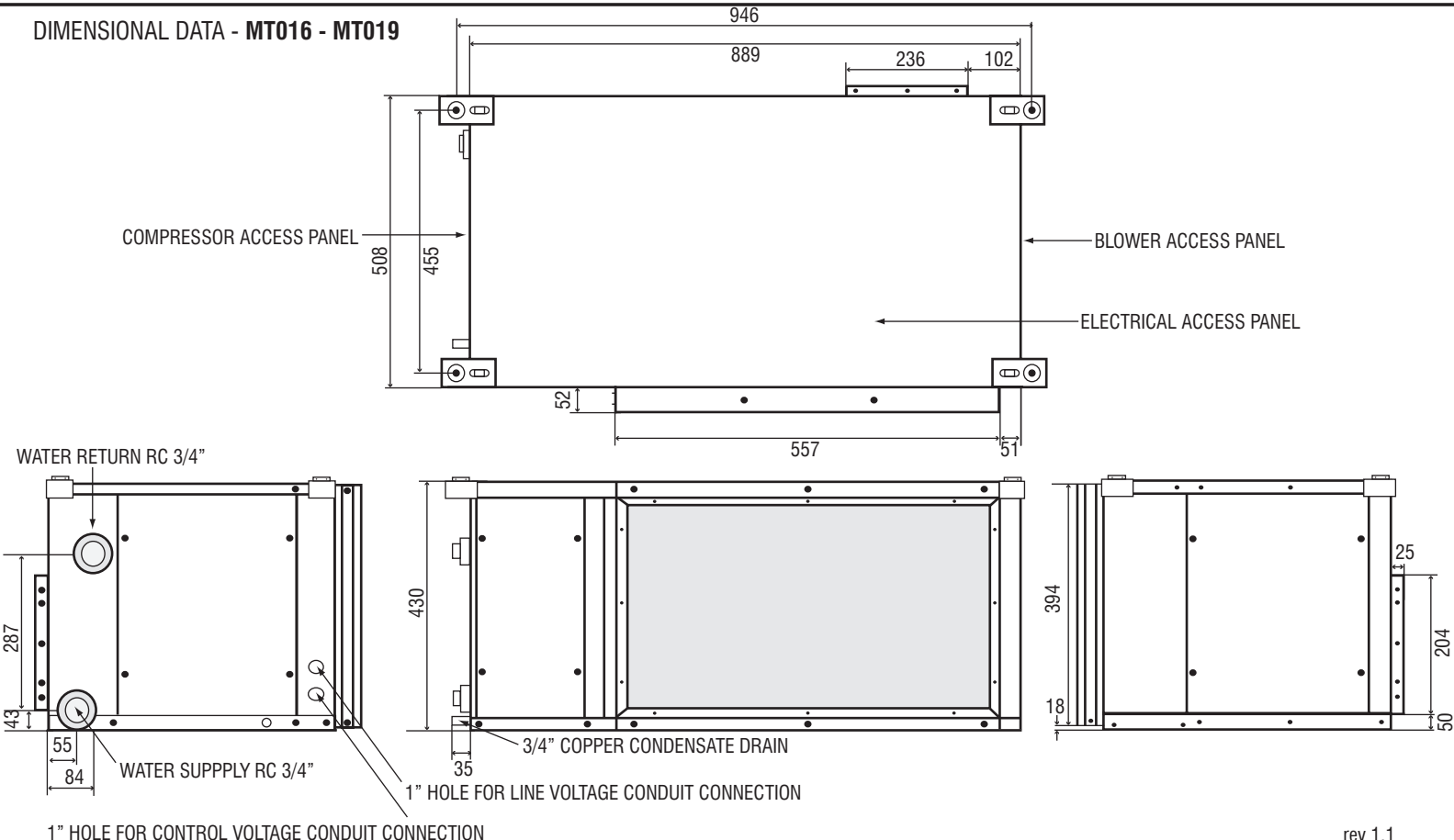
GLYCOL	15%	20%	25%
Cooling	0.99	0.99	0.98
Heating	0.99	0.97	0.96

**DIMENSIONAL DATA - MT009 - MT013**

SIZE	A	B	C	D
009	56	84	49	221
013	57	86	49	264

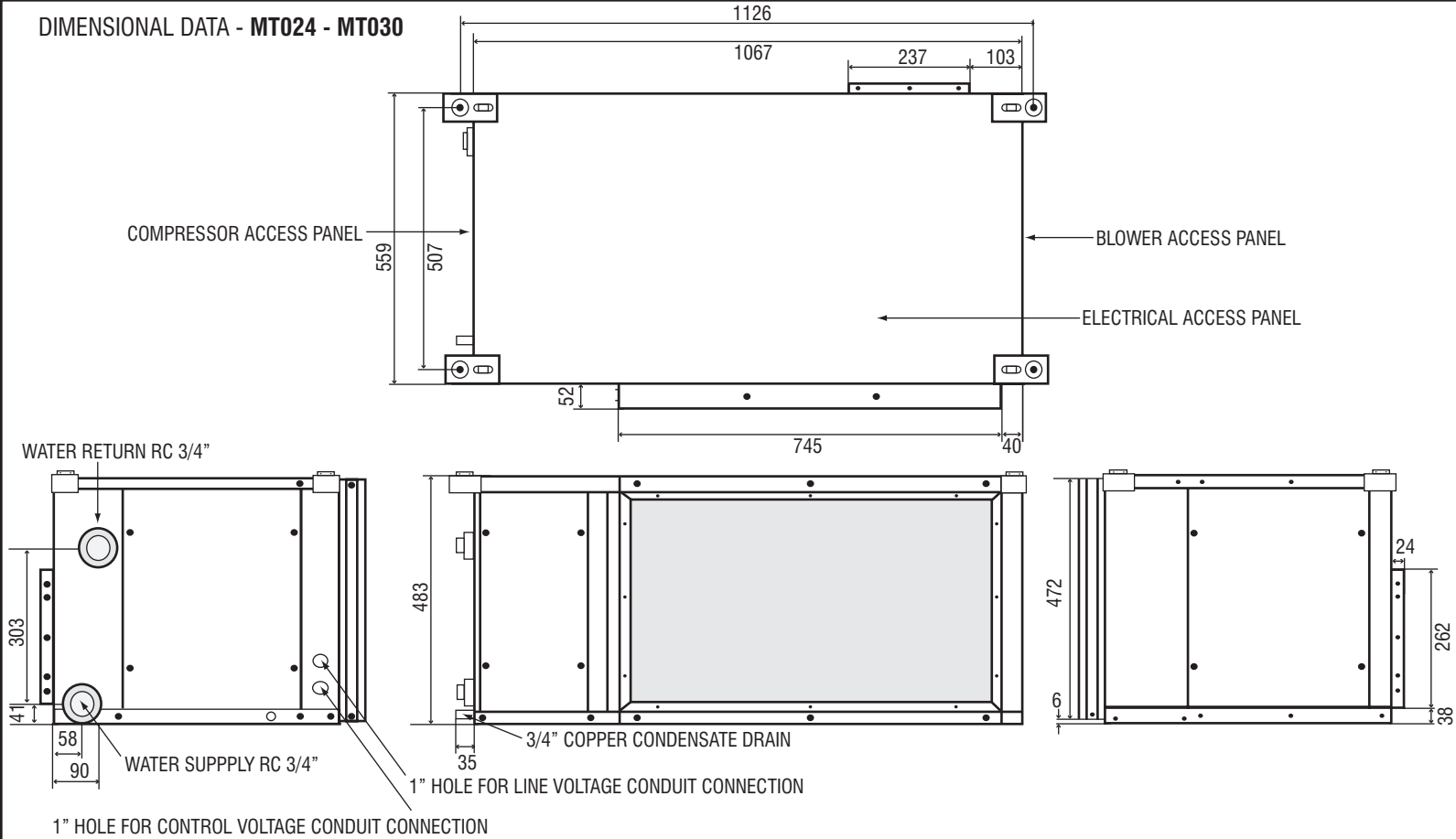


**DIMENSIONAL DATA - MT016 - MT019**

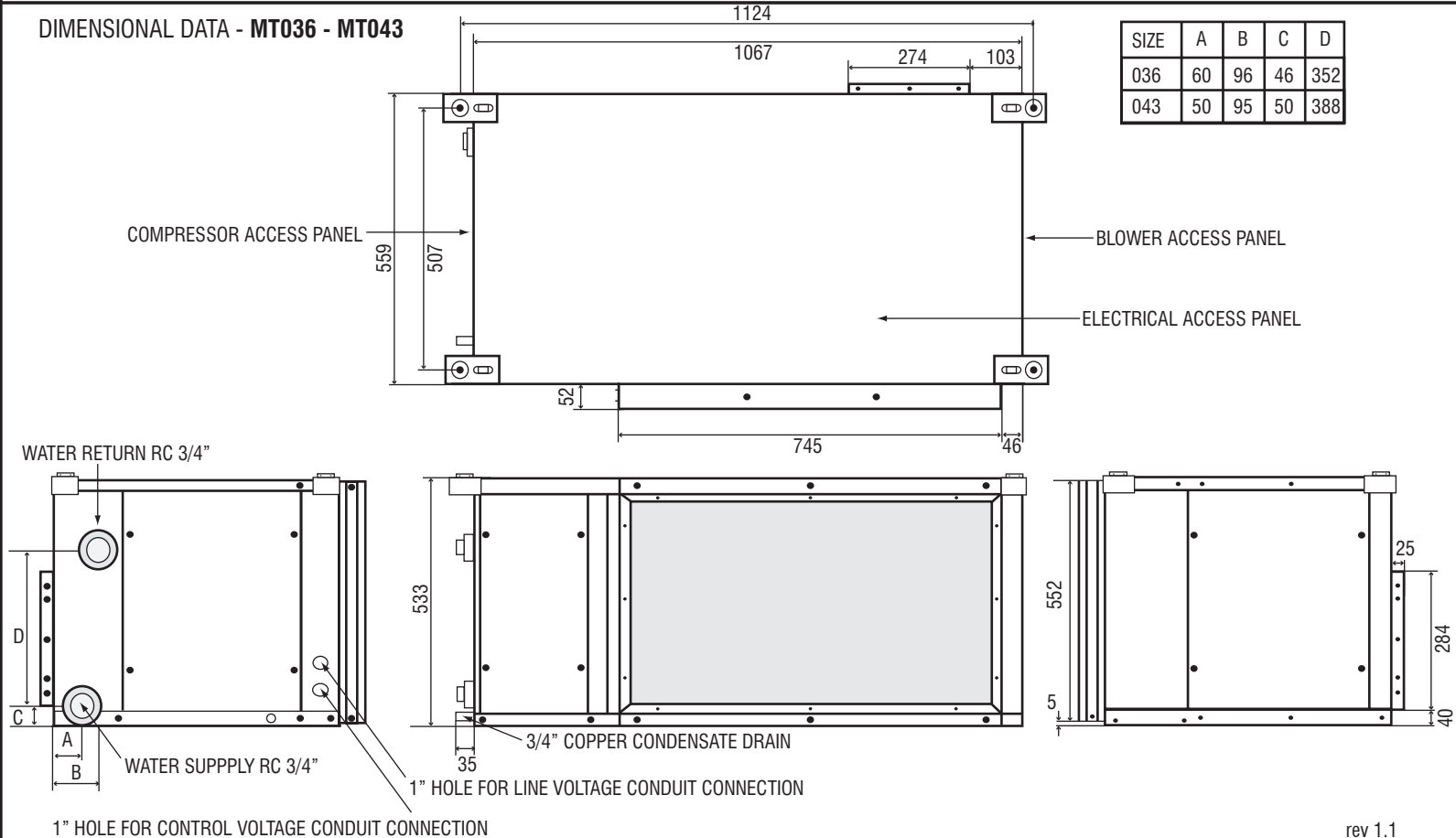


# Horizontal Cabinet Dimensions

## DIMENSIONAL DATA - MT024 - MT030

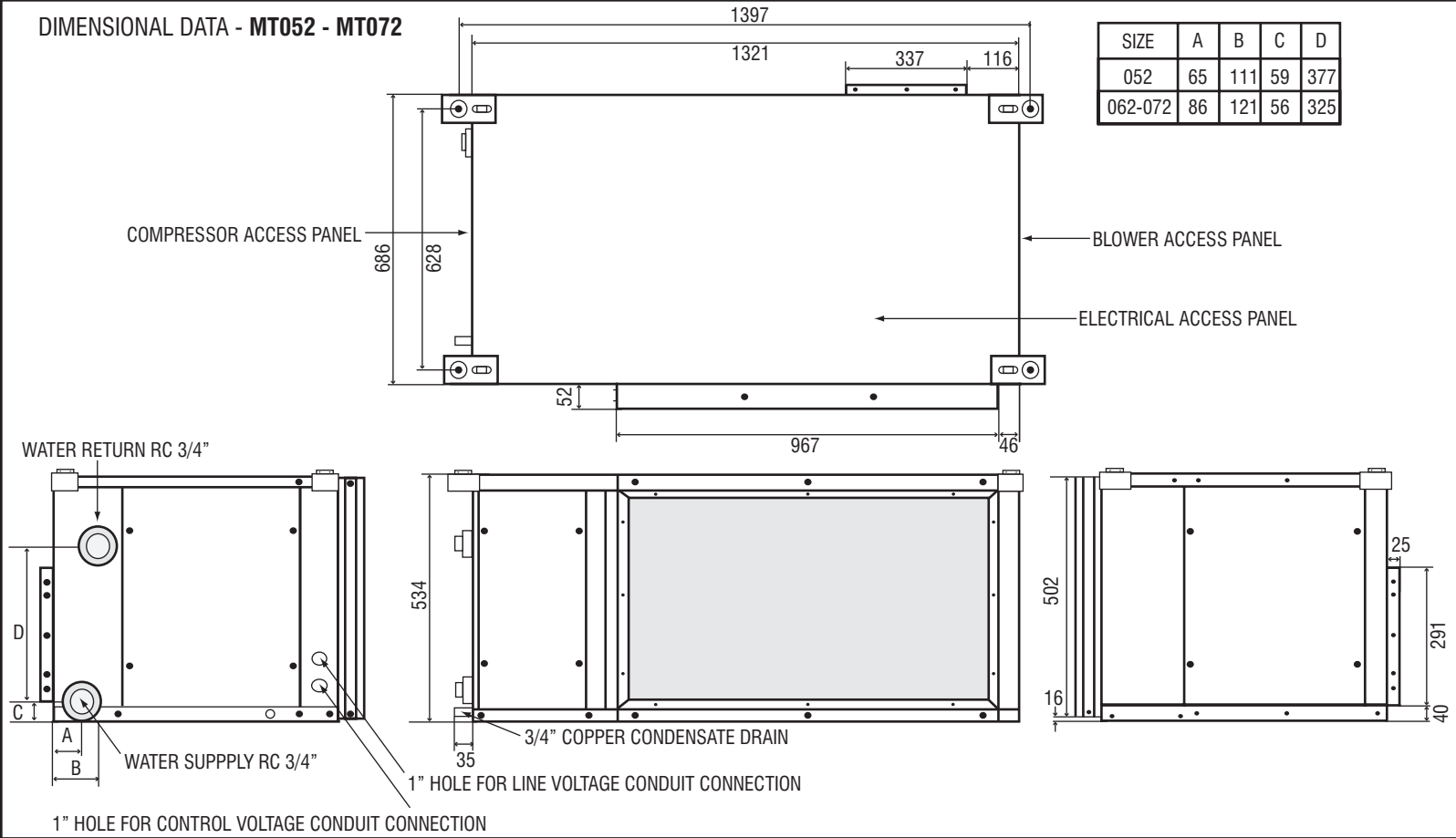


## DIMENSIONAL DATA - MT036 - MT043

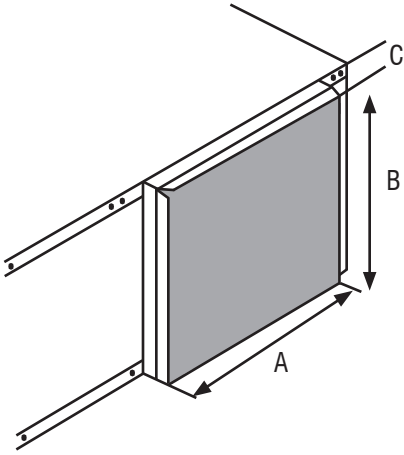


**DIMENSIONAL DATA - MT052 - MT072**

SIZE	A	B	C	D
052	65	111	59	377
062-072	86	121	56	325

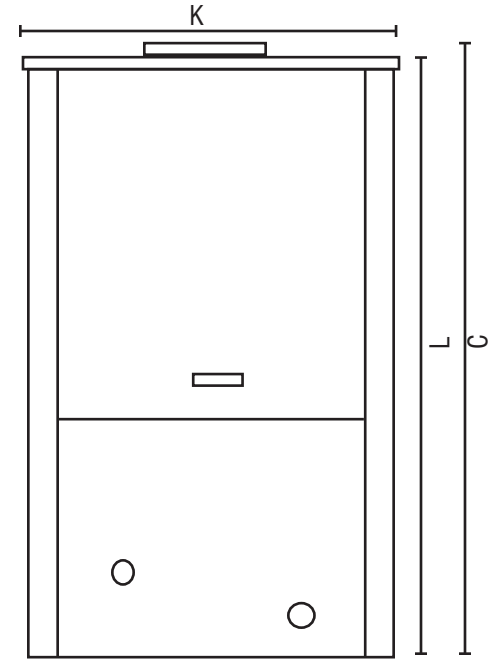
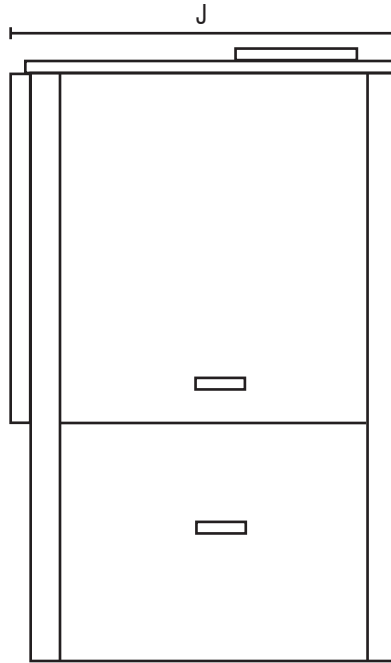
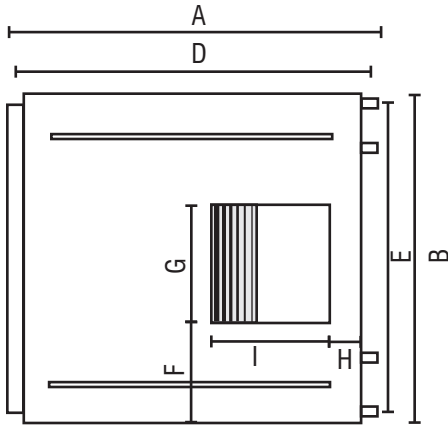


# Horizontal Filter Rack Dimensions



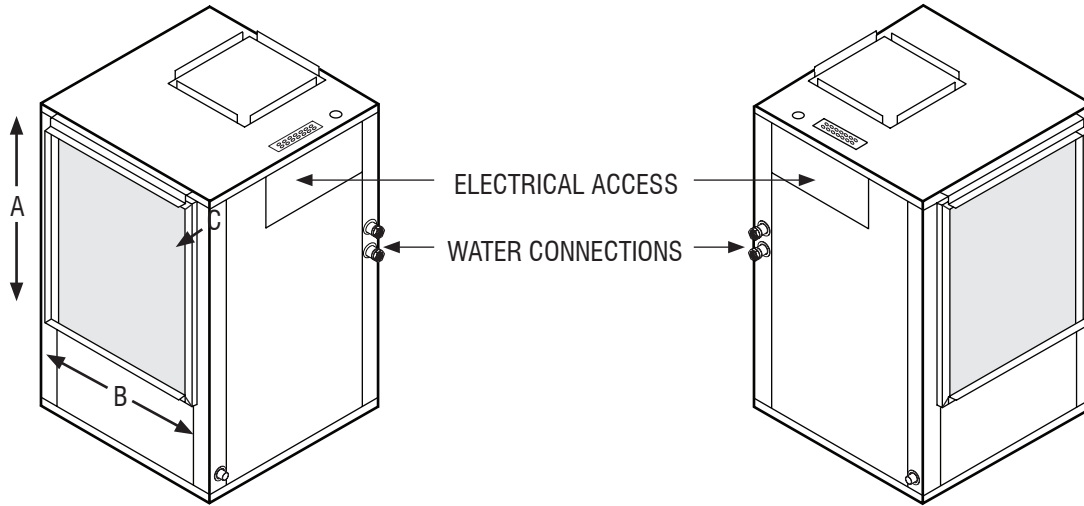
Model	Dimension		
	A	B	C
009-013	423	307	8
016-019	540	346	8
024-030	735	425	8
036-043	735	425	8
052-072	955	455	8

**TOP VIEW**



MODEL	A	B	C	D	E	F	G	H	I	J	K	L	M
MT009	580	550	673	545	485	181	188	50	181	540	650	650	1/2
MT013	580	550	673	545	485	181	188	50	181	540	650	650	1/2
MT016	580	550	673	545	485	143	240	50	210	540	650	800	1/2
MT019	580	550	673	545	485	143	240	50	210	540	650	800	1/2
MT024	720	650	950	680	585	208	237	60	264	680	650	972	3/4
MT030	720	650	950	680	585	208	237	60	264	680	650	972	3/4
MT036	720	650	950	680	585	208	237	60	264	680	650	972	3/4
MT043	720	650	950	680	585	208	237	60	264	680	650	972	3/4
MT052	870	800	1123	833	735	223	335	60	292	830	800	1098	1
MT062	870	800	1123	833	735	223	335	60	292	830	800	1098	1
MT072	870	800	1123	833	735	223	335	60	292	830	800	1098	1

# Vertical Cabinet Dimensions



Model	Dimension		
	A	B	C
009-024	460.5	413	8
036-043	591	476	8
052-072	591	552	8

ZEPHYRUS INSTALLATION MANUAL REVISION TRACKING				
DATE	REV	PRODUCT	DESCRIPTION	PAGE
07/01/2011	1.0	Water Source Installation Manual	First Published	All
07/21/2011	1.1	Water Source Installation Manual	Revision	37